

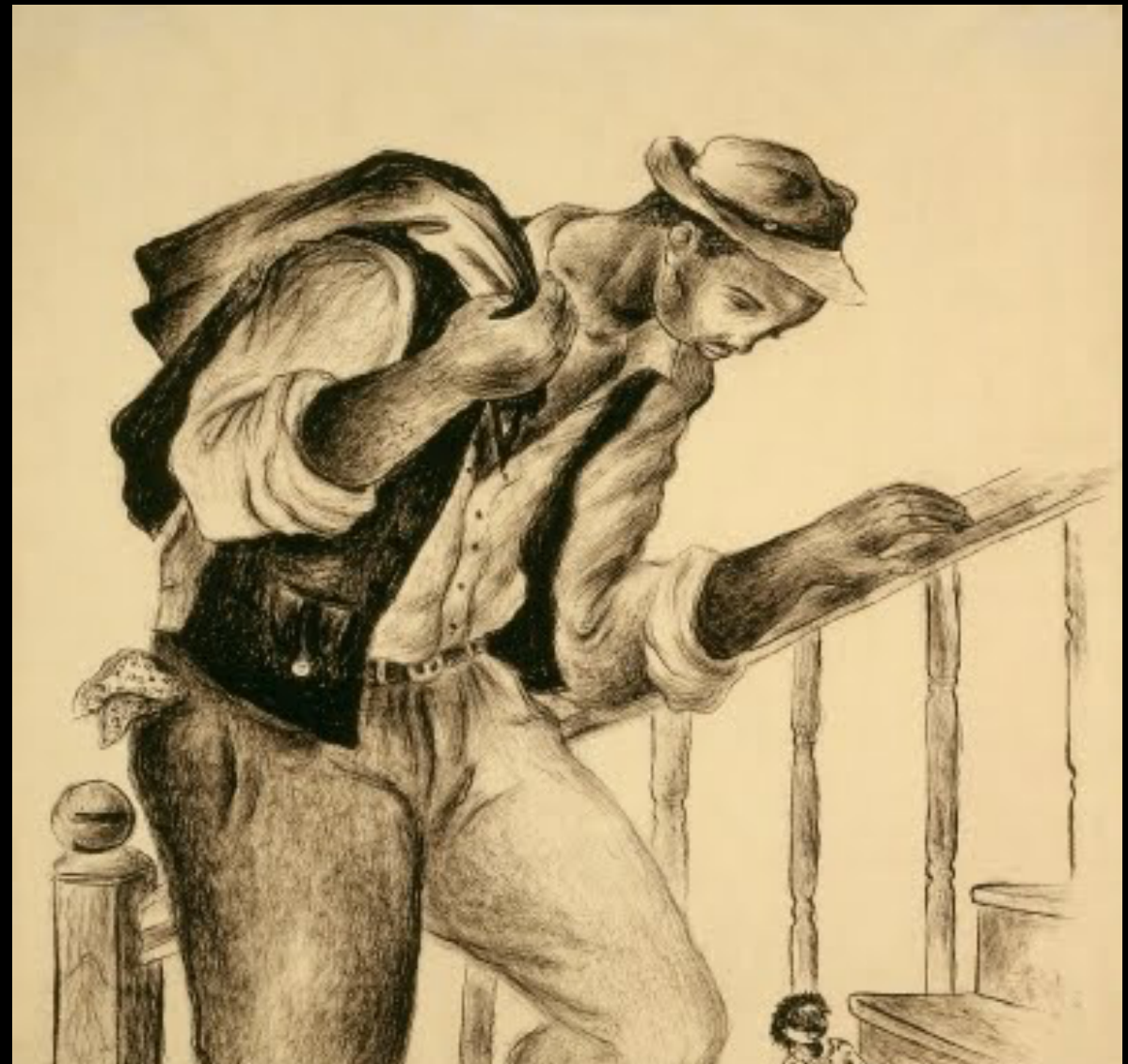
# African American Visual Artists

Week Six Art

Eldzier Cortor



Eldzier Cortor  
Stopping Place  
1937



Eldzier Cortor (1916–2015, US), *Coming Home from Work*, 1938/1943. Black ink on paper with pink fibers, 20 7/16" x 17 11/16" (52 x 45 cm). Art Institute of Chicago



Eldzier Cortor. *Southern Landscape (Southern Flood)*, ca. 1939–1940. Tempera and gesso on board, 20 x 34 in. Brooklyn Museum. © Eldzier Cortor



*Drawing for Southern Gate*

ELDZIER CORTOR, "Southern Gate,"  
1942-1943 (oil on canvas). |

This study for "Southern  
Gate"— ELDZIER CORTOR, "

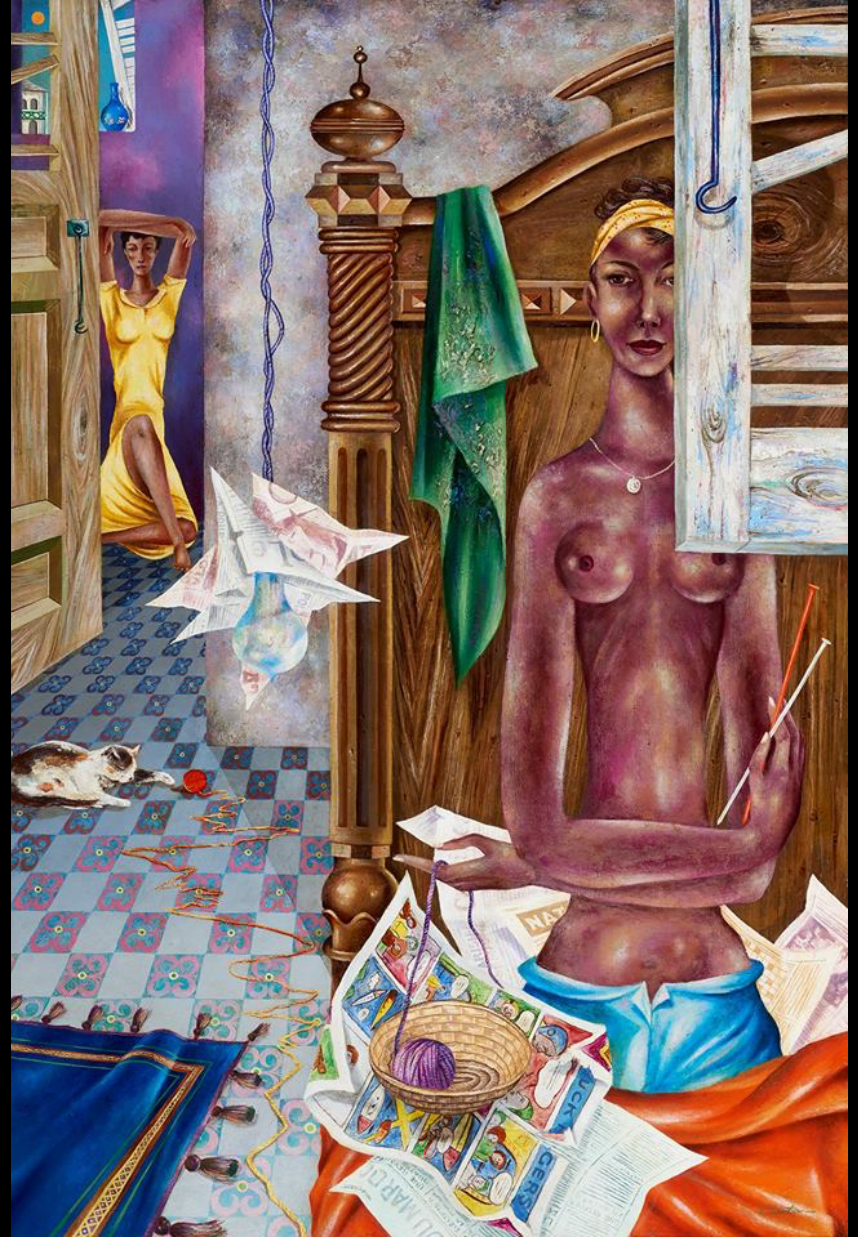




*L'Abattoire No. VI*, ca. 1950–  
1960. Woodcut on paper, 40 1/2  
x 29 in. Smithsonian American  
Art Museum. © Eldzier Cortor



Eldzier Cortor  
Room No. V 1948



Eldzier Cortor. Lady  
Knitting, 1949



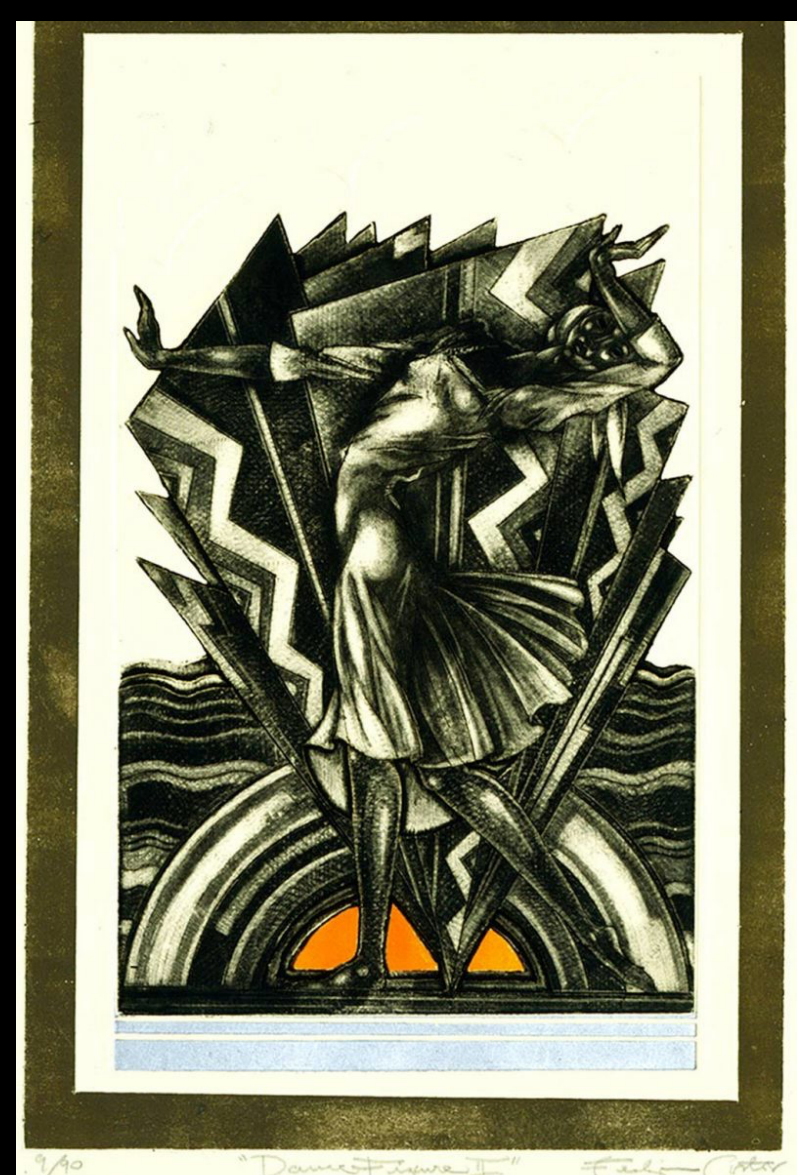
Eldzier Cortor, Classical Study No 36 , oil on canvas, circa 1979.



ELDZIER CORTOR, "Classical Study No. 34," 1968 (oil on canvas). |



Eldzier Cortor. Dance Composition  
Etching, aquatint, and flat bite  
1980's



Dance Figure II, 1989. Etching