

# Early Art of the African Continent Part One

## The Sahel, Savannah, Western Africa, and Guinea Coast,

Seeking an Answer:

Why are 90-95% of Africa's known cultural heritage artifacts housed outside the continent of Africa?



# Week Five Art



Ikenga  
Igbo Igbo Peoples, Nigeria, wood (University  
Pennsylvania Museum of Art



Ikenga with a staff and tusk,  
Igbo Peoples, Nigeria, first half  
of the 20th century, wood,  
116.0 cm x 30.0 cm x 30.0 cm  
(Princeton University Art  
Museum)



Mbari:

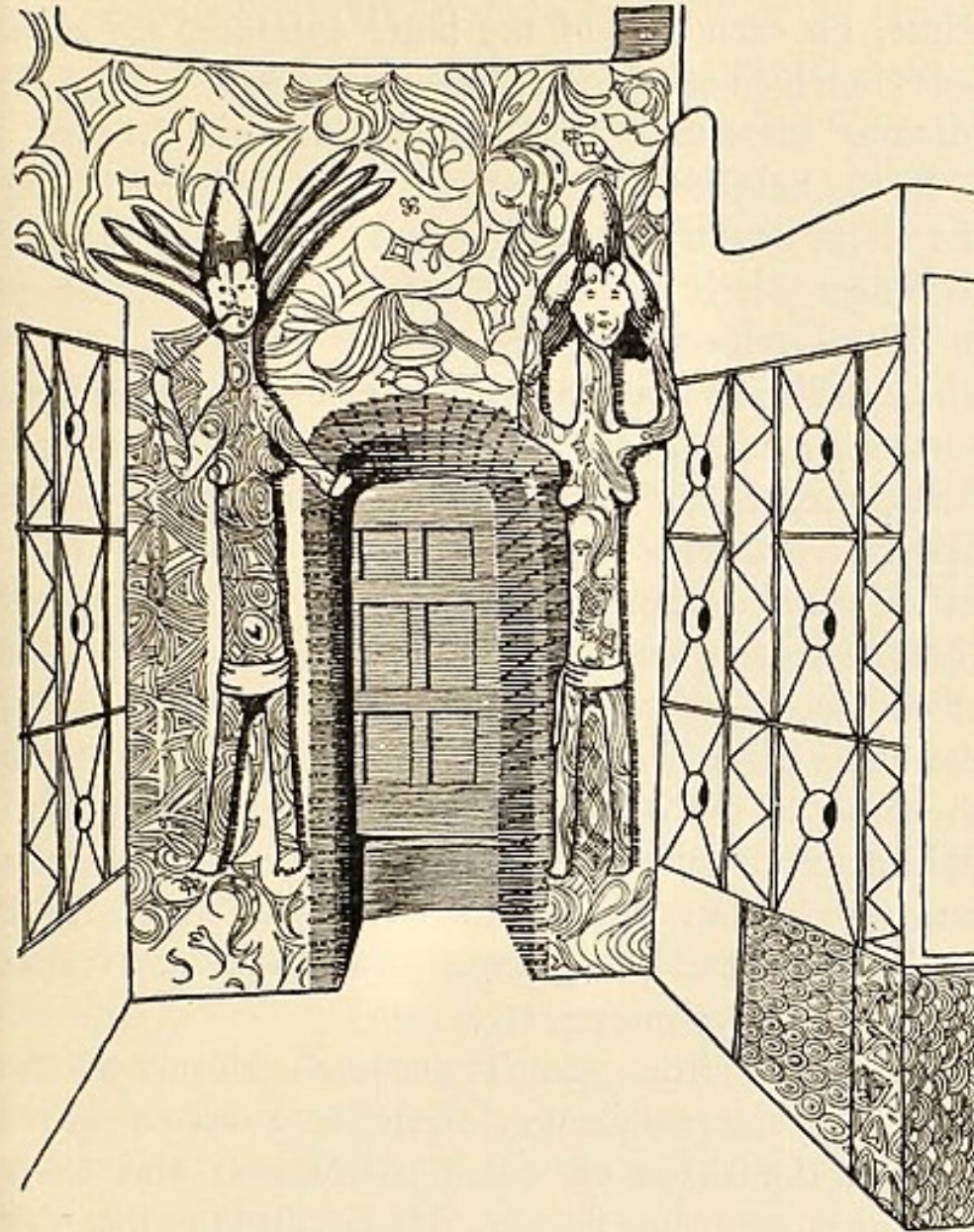


FIG. 19. The Guardians of the Shrine, Omogwa and Otamelli



*Vase with Rope* from Igbo-Ukwu, Nigeria, c. 9th–11th century C.E., leaded bronze





*Shell Vessel with Leopard* from Igbo-Ukwu,  
Nigeria, c. 9th–11th century C.E.

Reconstruction of the grave  
found at the Igbo Richard sub-  
site, Igbo-Ukwu, Nigeria (painting:  
Caroline Sassoon





*Double Egg  
Pendant from  
Igbo-Ukwu,  
Nigeria, c.  
9th-11th c*





Armlets, 9th/10th century, excavated at Igbo Richard, Igbo Ukwu, eastern Nigeria. Beads and copper wire, height 14.9 cm.

9th century Glass beads from Igbo-Ukwu



**Olowe of Ise, veranda post  
(Yoruba peoples)**



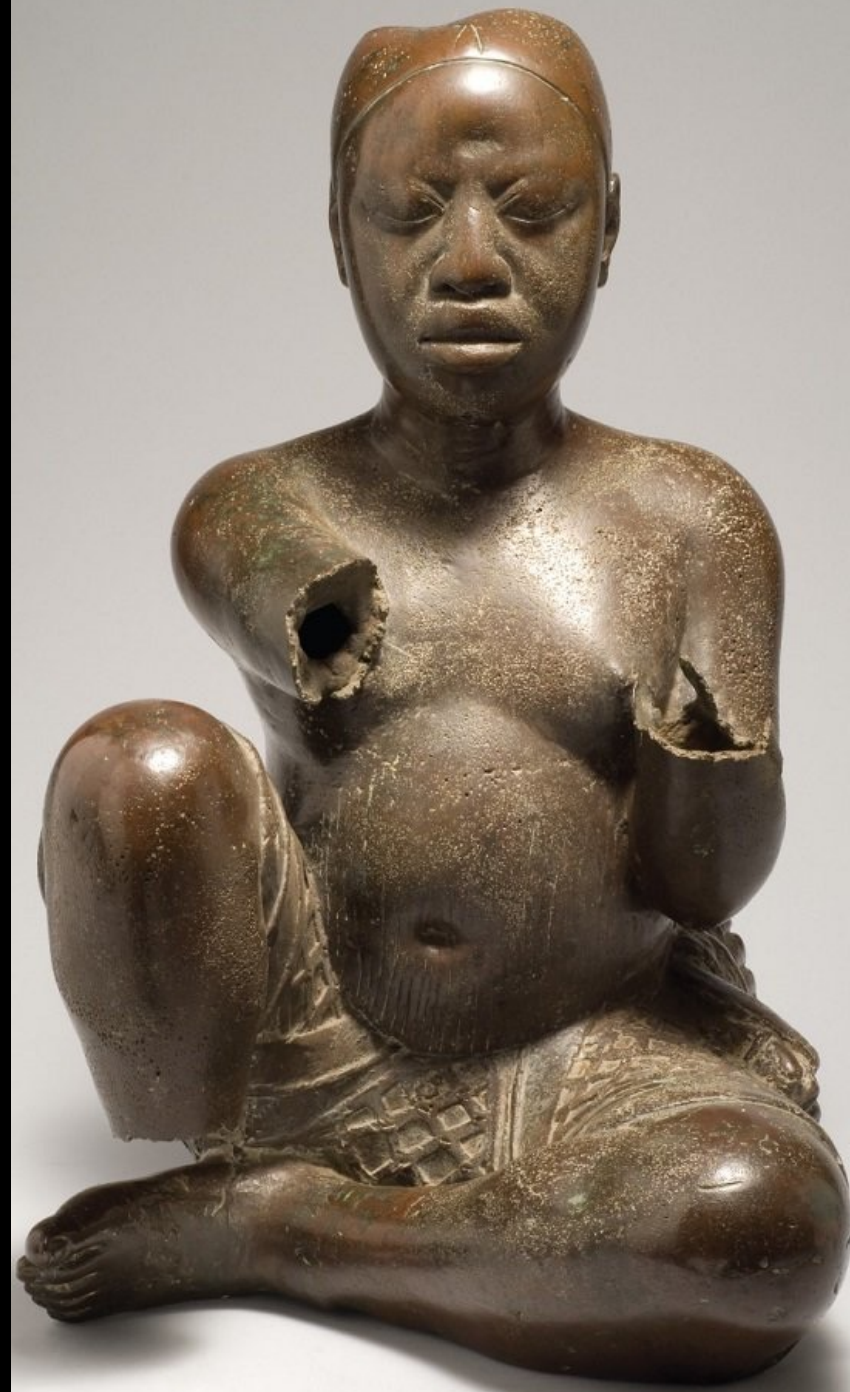
Olowe of Ise, Veranda Post of  
Enthroned King and Senior Wife (Art  
Institute of Chicago; photo: Dr.  
Delinda Collier, CC BY-NC-ND 4.0)





Beaded Ibeji (twins)

**seated figure, possibly from Ile-Ife, found at Tada, Nigeria, late 13th/14th century. Copper with traces of arsenic, lead, and tin, height 54 cm.**



Mask

Ile-Ife, Nigeria, c. early 14th century ce  
Copper. Height: 33 cm

Retained in the palace since the time of its  
manufacture (through the early twentieth  
century) where it was identified as King  
Obalufon Alaiyemore (Obalu- fon II).

Nigeria National Museums, Lagos Mus.  
reg. no. 38.1.2.





Head with crown  
Olokun grove site, Ile-Ife,  
Nigeria, c. early 14th century  
ce  
Copper alloy; Height: 343 mm  
Nigeria National Museums, Ife



figure of a king  
Wunmonije site, Ile-Ife, Nigeria, c. early 14th  
century ce Copper alloy. Height: 370 mm.  
National Museums, Lagos. Museum  
registration no. 13, then 79.R.9. Renumbered  
38.1.1.



Mounted ruler (16th century), Edo peoples, Benin kingdom, Nigeria. Courtesy Museum of Fine Arts, Boston





*Plaque of Oba Esigie on Horseback with  
Attendants, 16th/17th century*

*Equestrian Oba and  
Attendants, 1550-1680,  
Nigeria, Court of Benin,  
Edo peoples, brass, 49.5 x  
41.9 x 11.4 cm (*





Detail of relief plaque showing two officials with raised swords, showing the high relief of the bodies and fully-free swords

Detail





Artist Unidentified, *Relief plaque showing a dignitary with drum and two attendants striking gongs*, c. 1530-1570, copper alloy



*Benin Plaque: the Oba with Europeans, 16th century,*





relief plaque (Portuguese soldier, detail), c. 16th–17th century, copper alloy, from Benin City, Edo

Figure: Leopard Head  
Edo peoples  
16th–19th century



*Fowl, bronze & cast iron from the Kingdom  
of Benin, stolen in 1897  
National Gallery of Art*





The Hamburg ethnological museum's collection of Benin bronzes includes this snake sculpture (17th-18th century).

Pendant mask created  
in the early sixteenth  
century for an Oba Esigi  
ruled 1517 to the  
1550s.



Head of an Oba, 16th  
century (ca. 1550)  
Nigeria; Edo peoples, court  
of Benin



Head of an Oba  
Edo peoples  
1550–1680





**Bronze Head of Queen Idia**

