

LAUNCHING THE IMAGINATION THROUGH CONTEMPORARY ART

TUESDAYS, 7:00 P.M. – 8:30 P.M.

INSTRUCTOR: LISA COSTELLO

THIS WEEK: ELEMENTS

Color - Theory, Properties, Light & Pigment,
Color Harmonies, Optical Effects



LAST WEEK

1. Shape and Mass, Implied Shapes
 2. Light, Implied Light
 3. Texture - Actual & Visual Texture
 4. Pattern
-



THE VISUAL ELEMENTS & PRINCIPLES OF DESIGN

Line

Unity & Variety

Scale

Shape & Mass

Balance

Hierarchical Scale

Light

Symmetrical Balance

Proportion

Texture & Pattern

Asymmetrical Balance

Color

Emphasis & Subordination

Rhythm

Space

Time and Motion



CREATING AND CREATIVITY

While the exact nature of creativity remains elusive, there is a general agreement that creative people tend to possess certain traits, including:

Sensitivity

Productivity

Flexibility

Fluency

Originality

Analytic Skills

Playfulness

Organizational Skills



ELEMENTS: SHAPE





DIRECTIONAL LINE

HONG CHUN ZHANG
TWISTER#3
36"W X 24"H,
CHARCOAL ON PAPER,
2018

WWW.HONGCHUNZHANG.COM



IMPLIED LINE

Yolanda del Amo

Refuge series

Archival pigment print

2019

ELEMENTS: MASS



-
- *Anish Kapoor*
 - *Cloud Gate,*
 - 110-ton elliptical sculpture of highly polished stainless steel plates
 - mirror-like surface
 - 12-foot-high arch acts as a sort of gate and welcomes visitors into the curved chamber beneath the sculpture.



ELEMENTS: IMPLIED SHAPE

Lynne Drexler
Born in Newport News, Virginia
1928 – 1999
Maui Melody, 1968

COLOR

COLOR THEORY

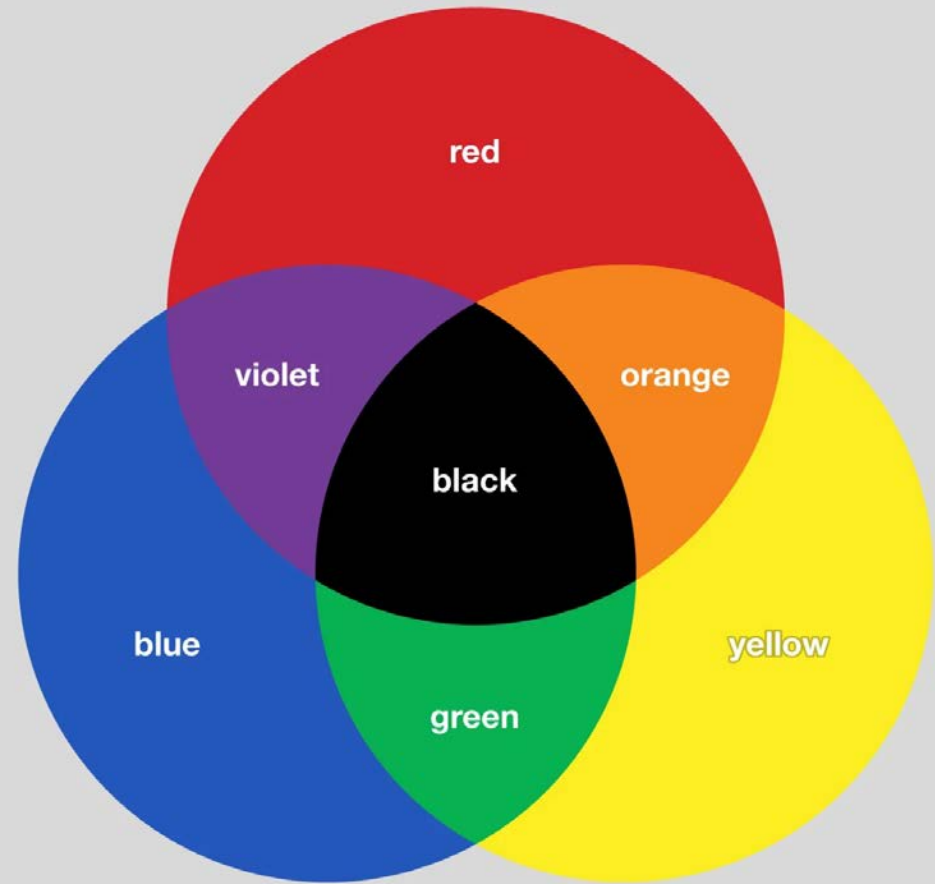
Colour wheel



RYB colour model

COLOR

RYB - Red Yellow Blue
Traditional color wheel



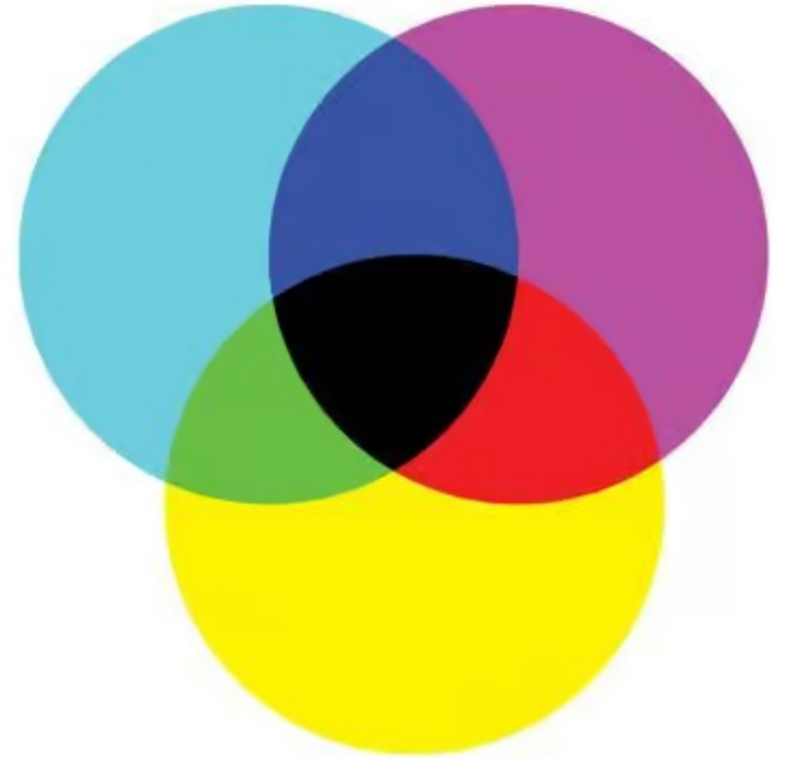
COLOR

RGB – Color Model for
Television and Light
(Red Green Blue)

CMYK – Color Model for
Print Media
(Cyan Magenta Yellow Black
And K stands for key)



RGB



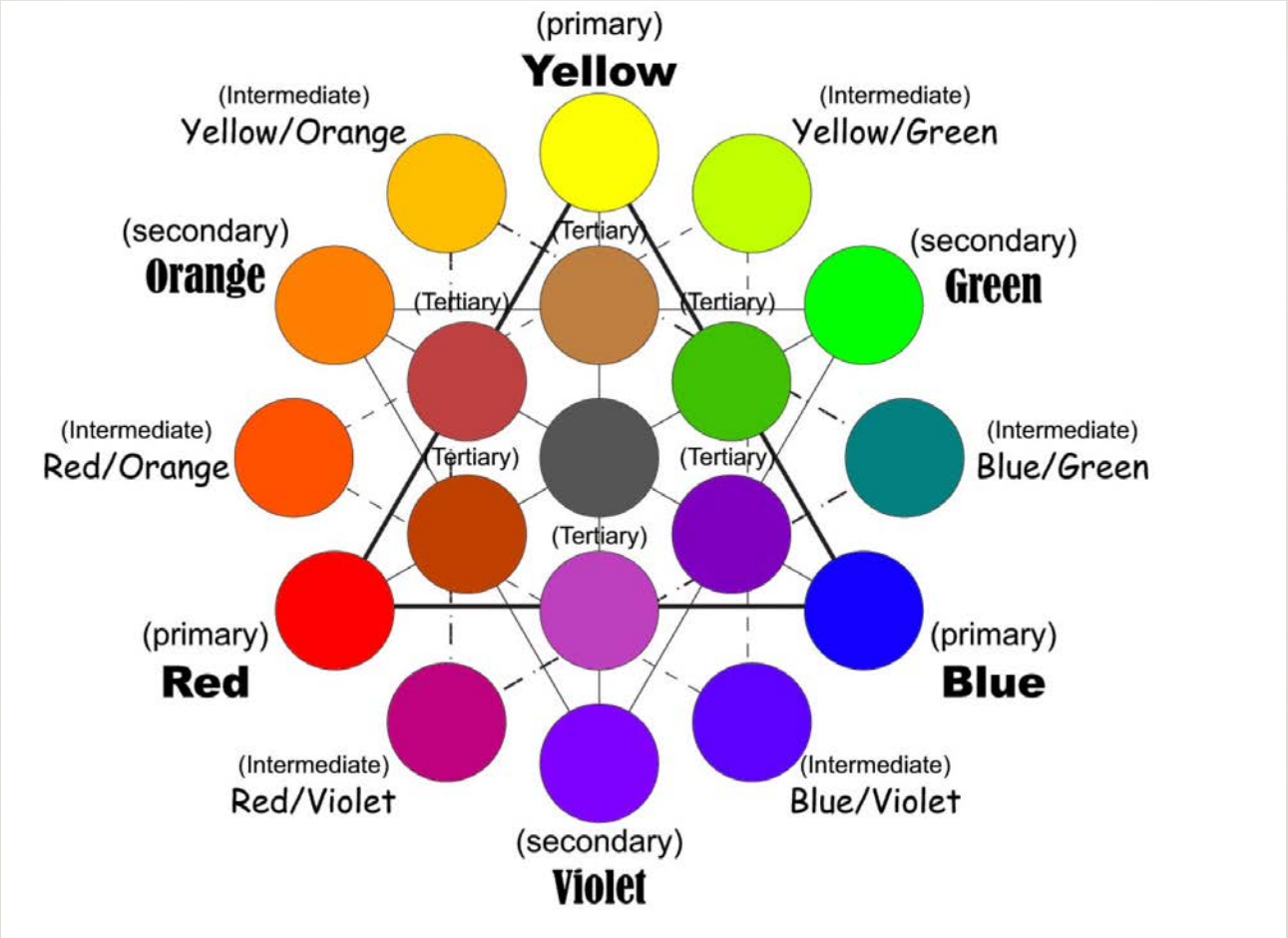
CMYK

ELEMENTS: JAMES TURRELL

https://youtu.be/MVoMJHSNyl0?si=acmwElhgXgfBw0_2



COLOR THEORY – COLOR WHEEL



TERTIARY COLORS

Shara Hughes
Chaos Chasm, 2018
oil and dye on canvas
78 x 70 inches (198.1 x 177.8 cm)



TERTIARY COLORS

Sophie Treppendahl



INTERMEDIATE COLORS

Shara Hughes
Sigh, 2020
oil, acrylic, and dye on canvas
68 x 60 inches
(172.7 x 152.4 cm)



THE ROLE OF NEUTRAL COLORS

Joan Stolz
Oil on canvas, 2022



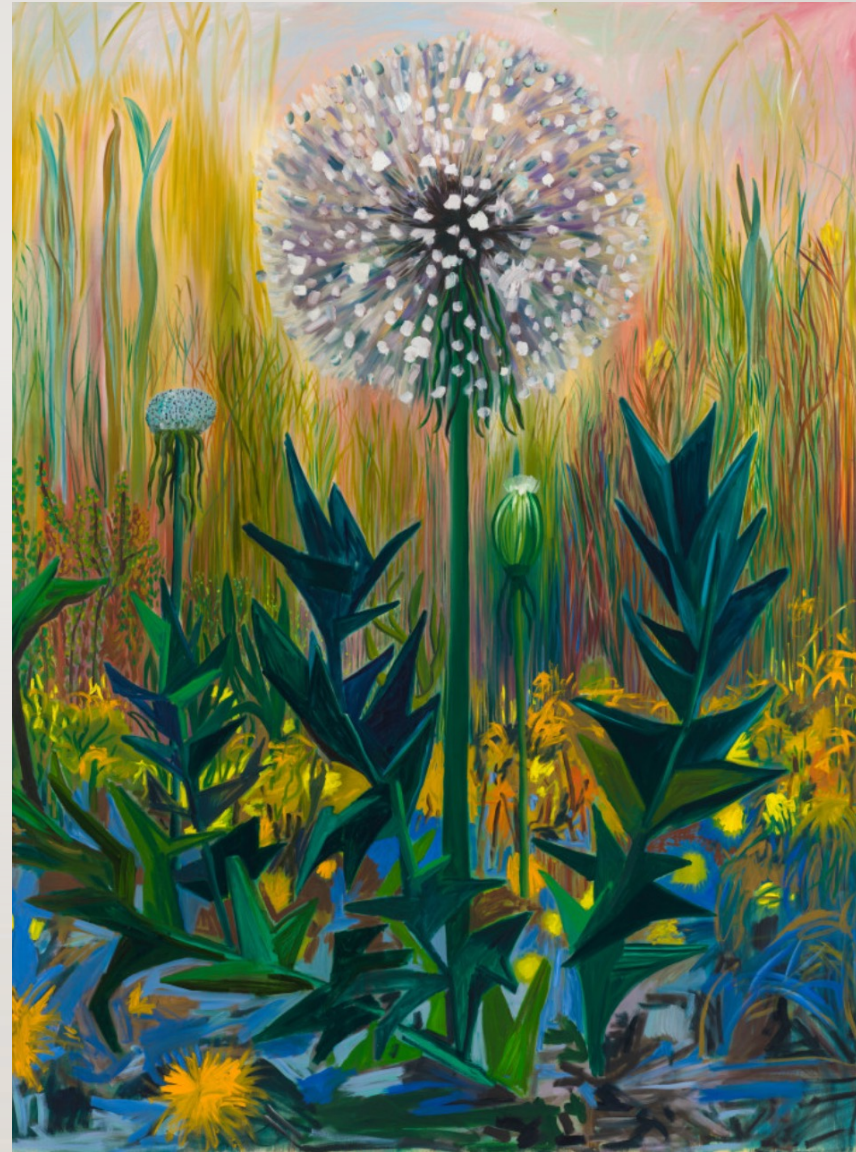
COMPLEMENTARY COLORS

Robert Kushner
Antella Curtain and Window: Compendium,
2023.
Oil, acrylic, conte crayon, and pencil on canvas,
48 x 36 inches






COMPLEMENTARY COLORS

Shara Hughes
Soft and Strong, 2021
oil, acrylic, and dye on canvas
96 x 72 inches
(243.8 x 182.9 cm)



ANALOGOUS COLORS




Shade	Hex Code	CMYK Color Code (%)	RGB Color Code	Color
Pure Blue	#0000ff	100, 100, 0, 0	0, 0, 255	
Blue	#0080ff	100, 50, 0, 0	0, 128, 255	
Violet	#8000ff	50, 100, 0, 0	128, 0, 255	

ANALOGOUS COLORS



MONOCHROMATIC COLORS



Shade	Hex Code	CMYK Color Code (%)	RGB Color Code	Color
Blue	#0000ff	100, 100, 0, 0	0, 0, 255	
Dark Blue	#00004e	100, 100, 0, 69	0, 0, 78	
Light Blue	#d8d8ff	15, 15, 0, 0	216, 216, 255	

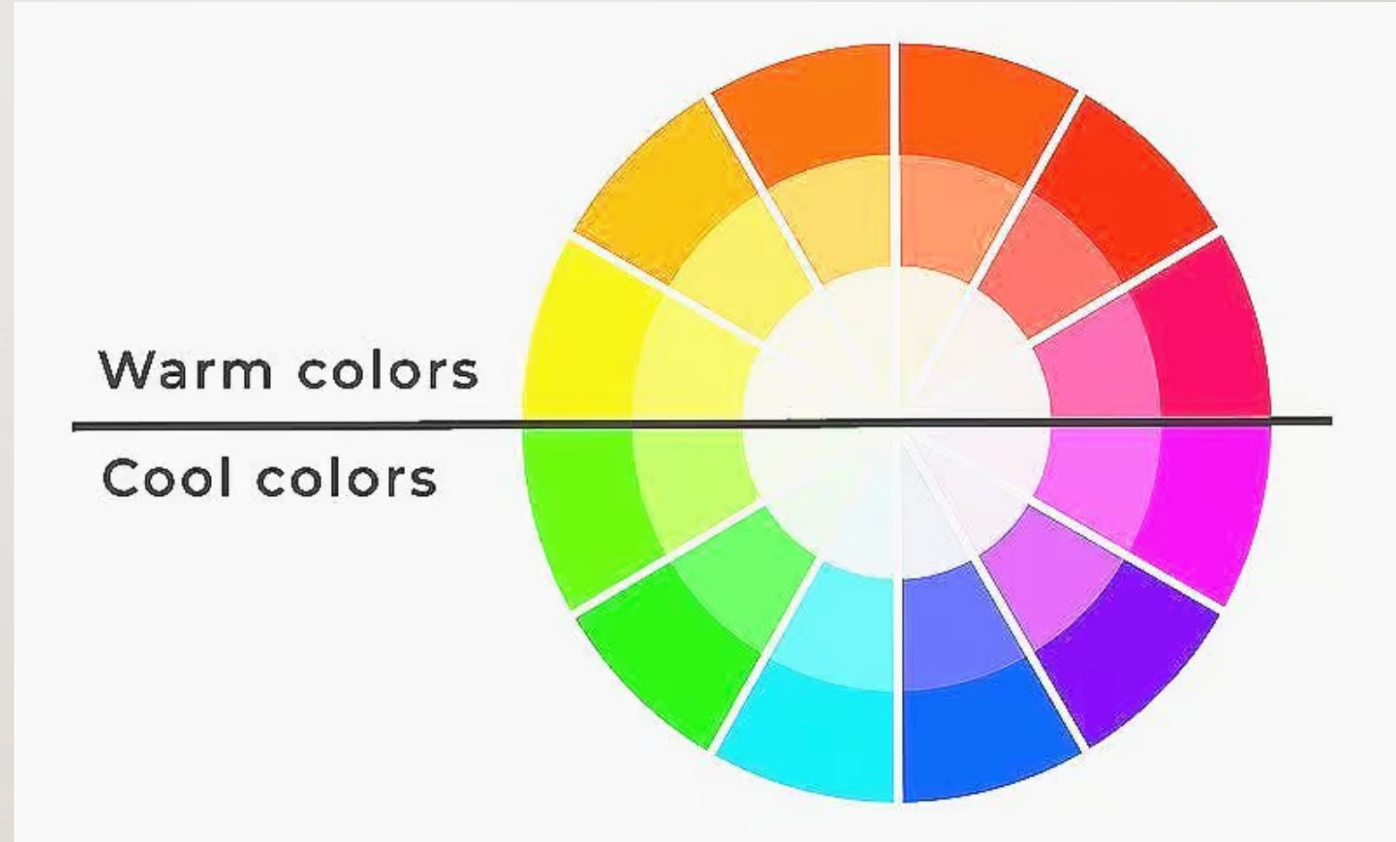
Sophie Treppendahl

Bathroom Vanity

30 x 30 inches, oil on canvas, 2022



COLOR TEMPERATURE



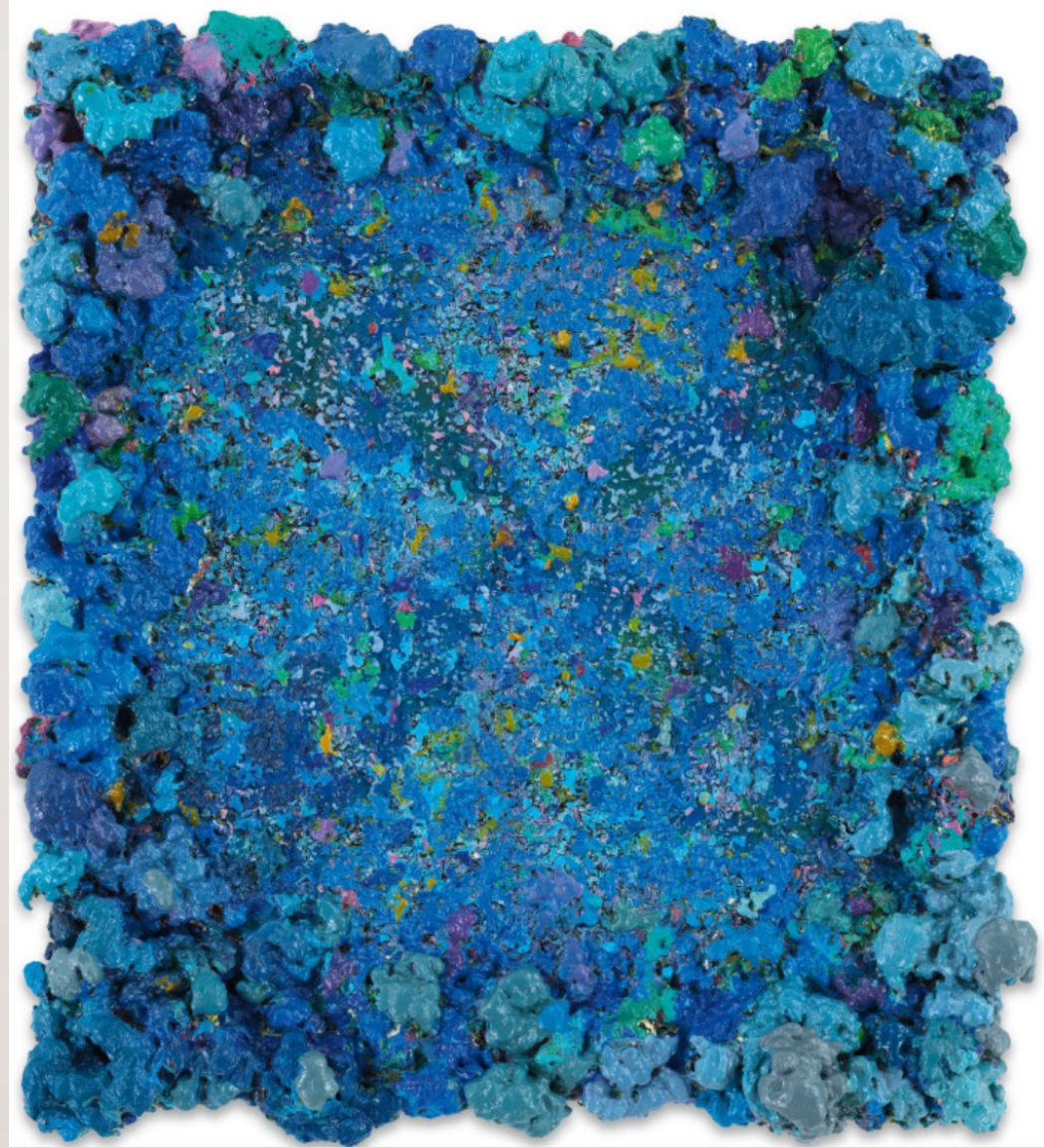
WARM COLORS

Sophie
Treppendahl



COOL COLORS

Phillip Allen
b. 1967
Deep Drippings (Hiss Mystique
Mireovian Version), 2019, Oil on
board,
16 1/2 x 14 1/2 inches, 41.9 x 36.8
cm



COLOR PROPERTIES

The Basics of Color: Saturation, Hue and Value

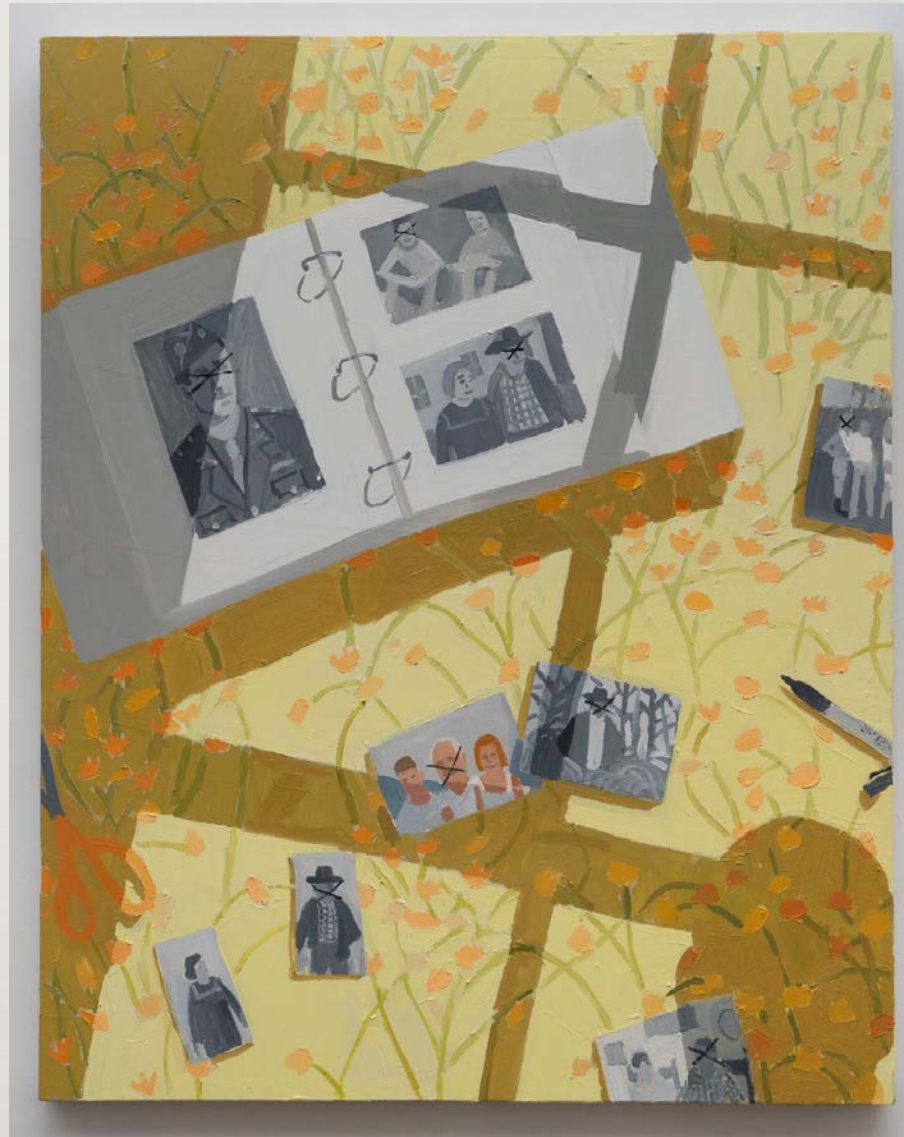
Online – HSV

Traditional color wheel.



COLOR PROPERTIES – TINT & SHADE

Sophie
Treppendahl



EMOTIONAL EFFECTS OF COLOR

Salmon Toor



<https://art21.org/watch/art-in-the-twenty-first-century/s3/laylah-ali-in-power-segment/>

LAYLAH ALI

The Greenheads Series
From 1996 – 2007
Gouache on paper



Questions & analysis!



ELEMENTS: IMPLIED SHAPE

Lynne Drexler
Born in Newport News, Virginia
1928 – 1999
Maui Melody, 1968

SHARA HUGHES (B. 1981)

LA LA LAND

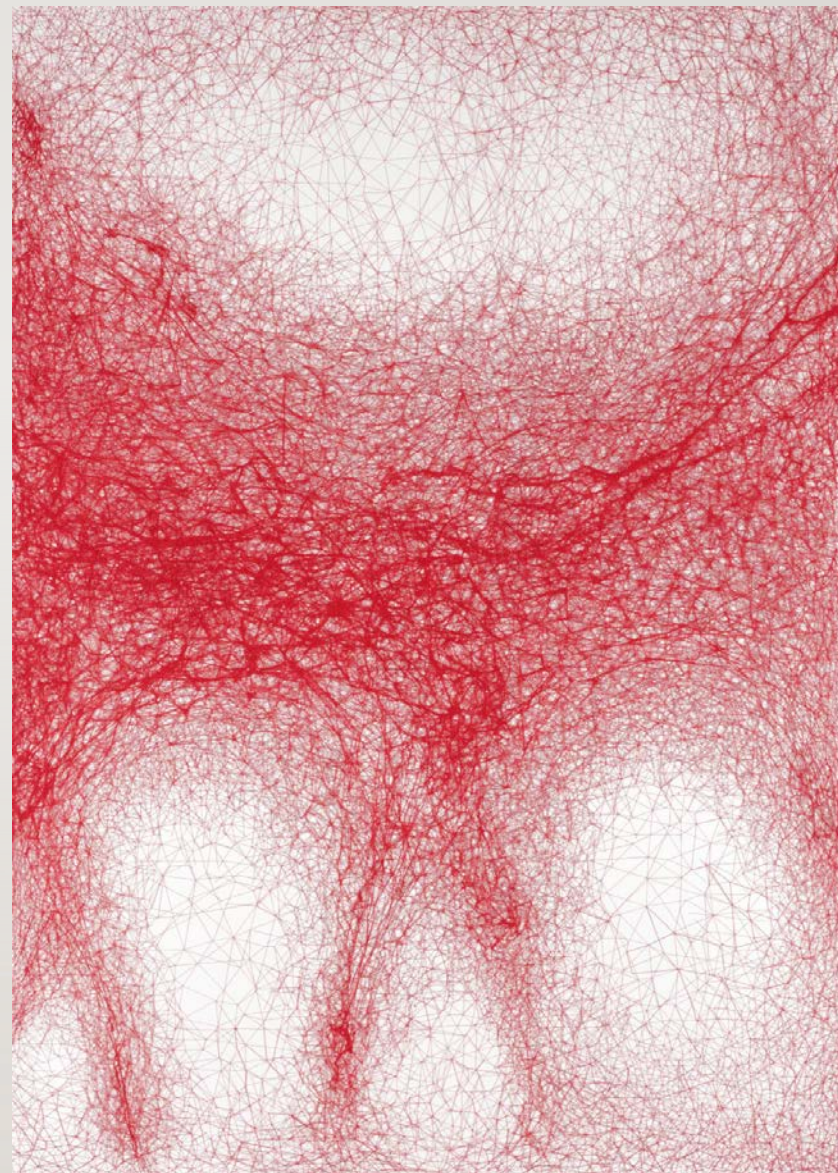
oil, glitter, wood shavings, acrylic,
spray paint on canvas

142.5 x 137 cm. (56 1/8 x 53 7/8 in.)

Painted in 2009



CHIHARU SHIOTA (B. 1972)
Silent Explosion V
strings on canvas
280 × 200 cm. (110 1/4 × 78 3/4 in.)
Executed in 2017





DELPHINE DESANE (B. 1988)
TO NO LONGER THINK. SECOND ACT.



Thank you !

This lecture includes content from Mark Getlein's text book
"Living with Art," ninth edition, from McGraw Hill, 2010
Artwork discussed in the lecture was found through galleries and museum collections.