
Update on Immunization for Seasonal Influenza

Two Basic Questions

- Which vaccine should you receive?
- When should you be vaccinated?

Which Vaccine Should You Receive?

- This season there are nine influenza vaccines
- Four of these are standard-dose, egg-based, quadrivalent vaccines
- One is an adjuvanted, standard-dose, egg-based, trivalent vaccine
- The remaining four vaccines are my top choices

Two New Vaccines Are Available This Season

- The high-dose senior vaccine is now quadrivalent
- The adjuvanted vaccine is now available as a quadrivalent vaccine in addition to the trivalent version

What Components Have Changed for the 2020-2021 Influenza Season?

- A/H1N1: Updated*
- A/H3N2: Updated
- B/Victoria: Updated
- B/Yamagata: Remains the same

*New component is A/H1N1/Guangdong (2019)

What Components Have Changed for the 2020-2021 Influenza Season?

- A/H1N1: Updated*
- A/H3N2: Updated
- B/Victoria: Updated
- B/Yamagata: Remains the same

*New component is A/H1N1/Guangdong (2019)

My Four Recommended Vaccines

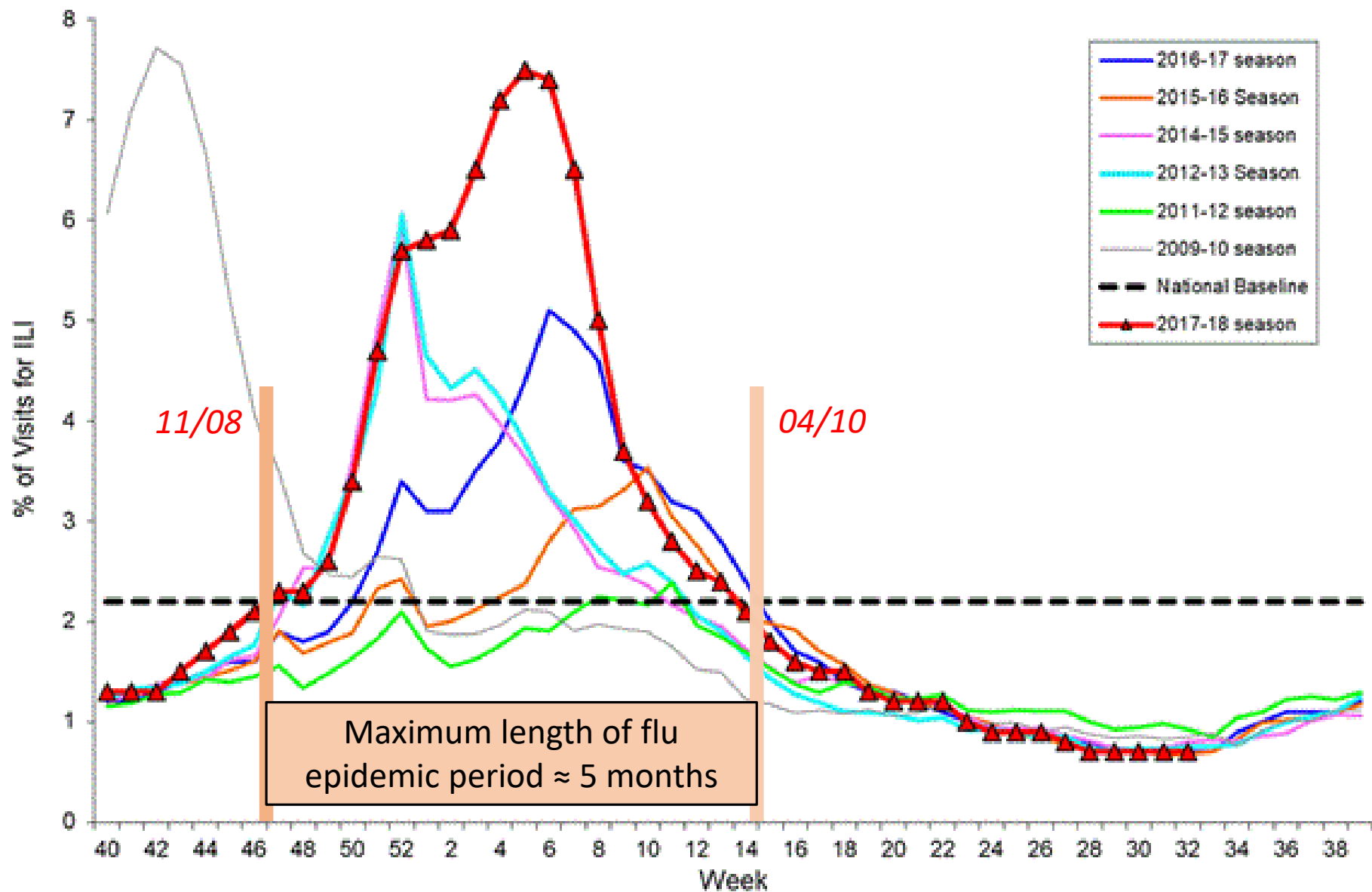
1. **FLUBLOK:** quadrivalent, non-egg, high-dose recombinant so exact match [Walmart]
2. **FLUCELVAX:** quadrivalent, non-egg, grown in mammalian cells so less adaptation [CVS]
3. **FLUAD:** quadrivalent, adjuvanted so strong boost [Walgreens]
4. **FLUZONE:** quadrivalent, high-dose senior vaccine [Everywhere]

- *Kindly note that these recommendations are based solely on the characteristics of the vaccines and NOT on data from field trials.*

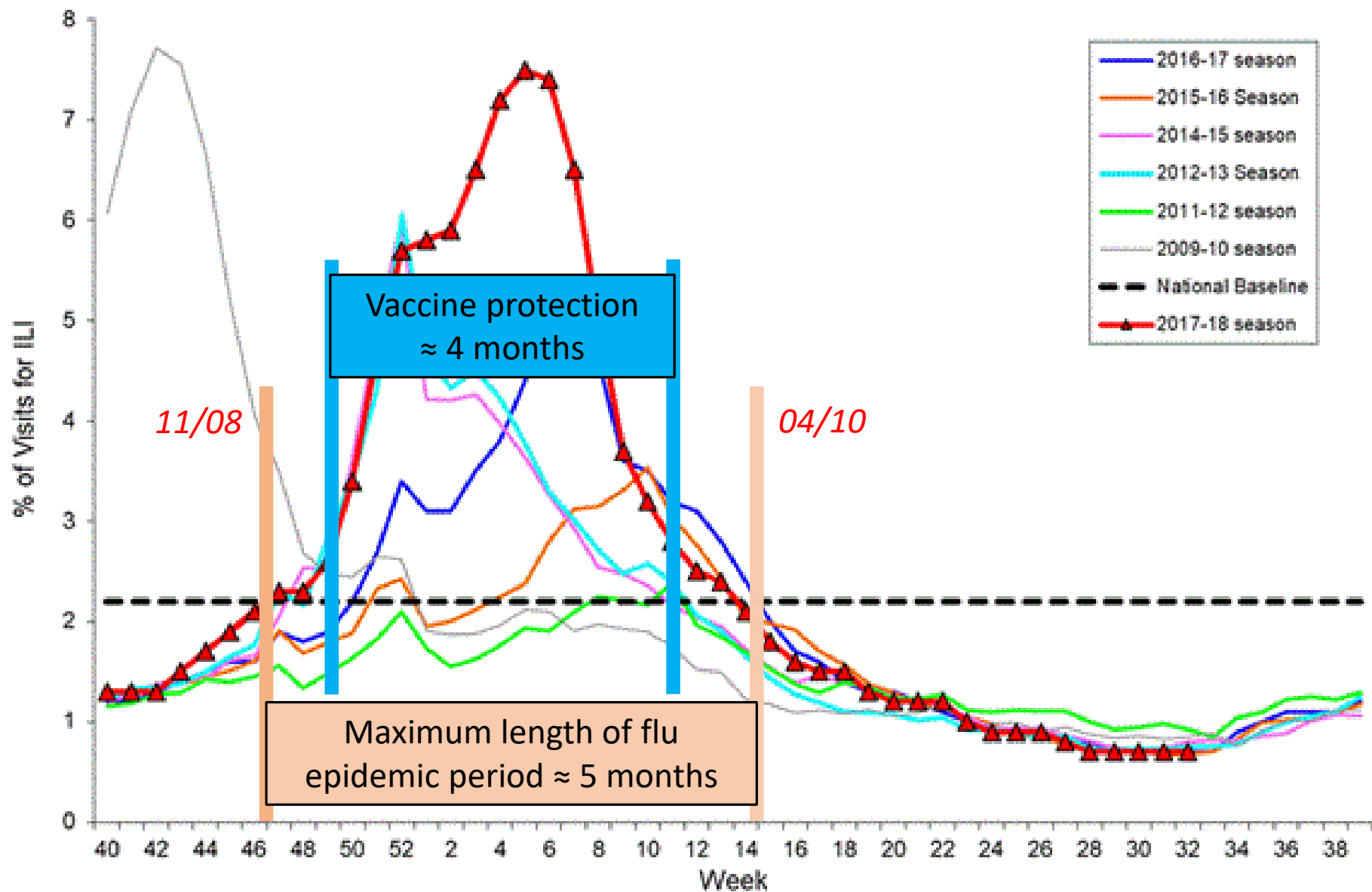
When Should You be Vaccinated?

- “Vaccine should be administered by the end of October, but vaccination should continue to be offered as long as influenza viruses are circulating locally and unexpired vaccine is available”
- “Vaccination too early in the season (*e.g.*, July or August) may lead to suboptimal immunity later in the season, particularly among older adults”

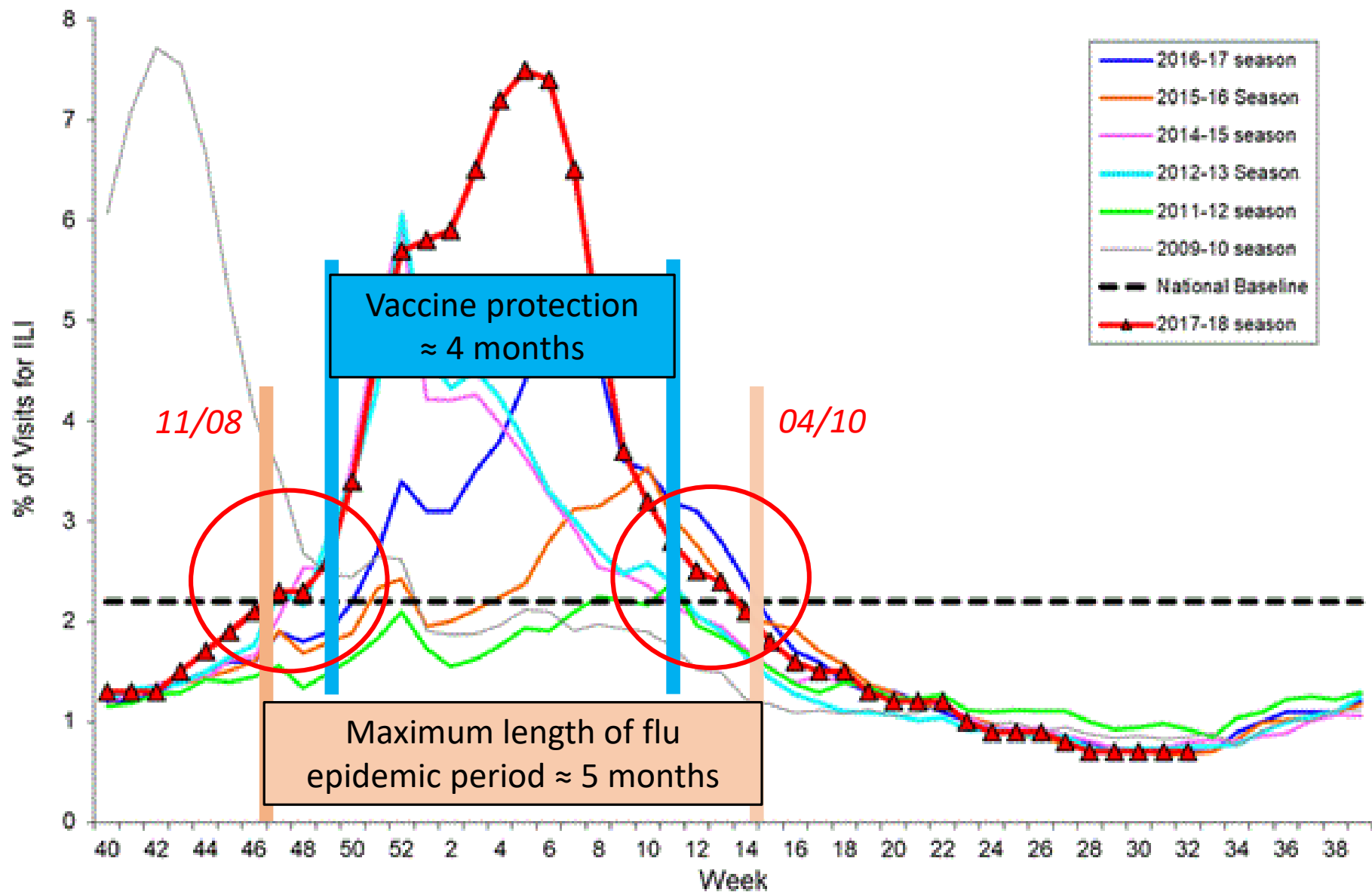
Percentage of Visits for Influenza-like Illness (ILI) Reported by the U.S. Outpatient Influenza-like Illness Surveillance Network (ILINet), Weekly National Summary, 2017-2018 and Selected Previous Seasons



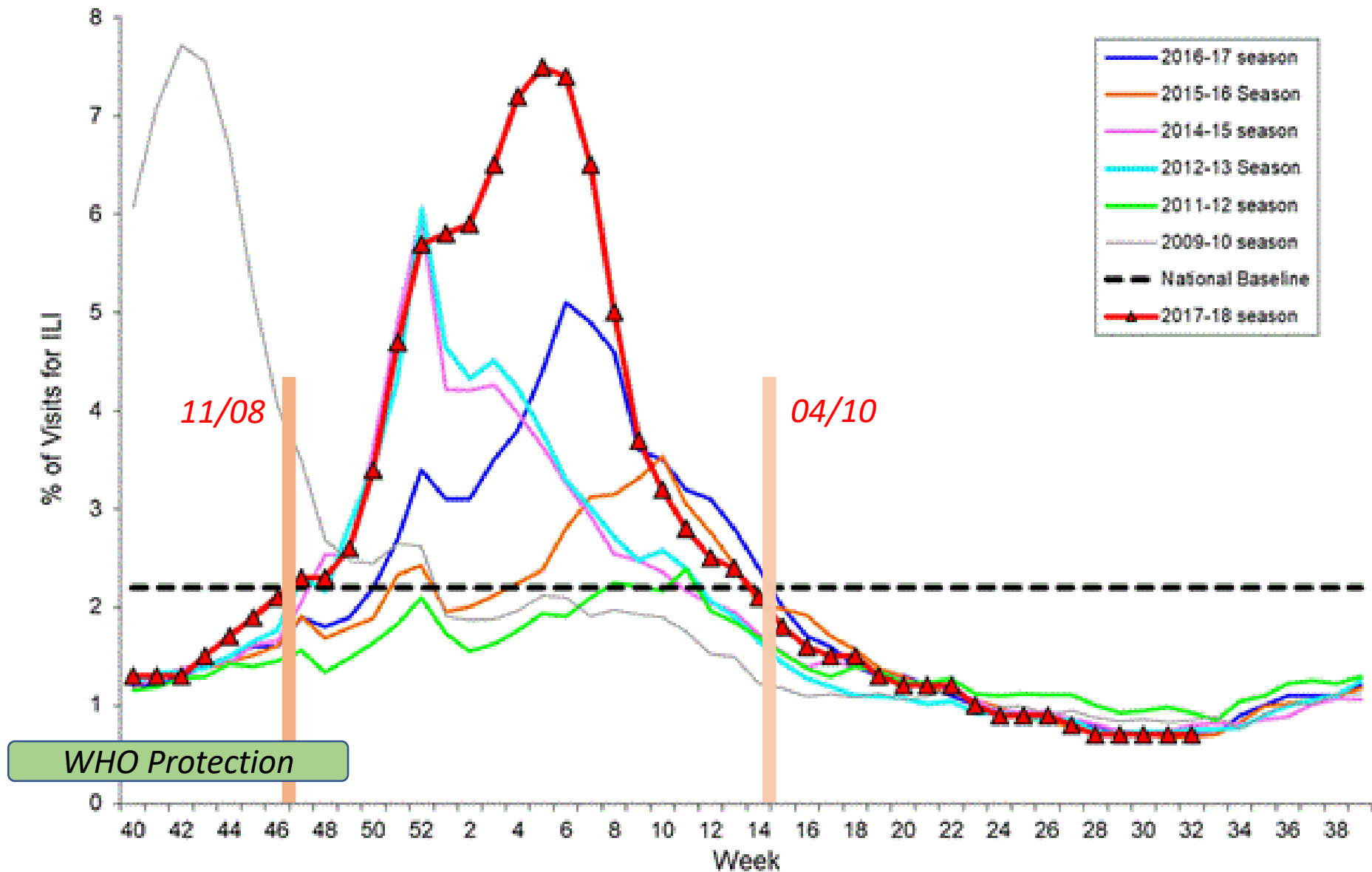
Percentage of Visits for Influenza-like Illness (ILI) Reported by the U.S. Outpatient Influenza-like Illness Surveillance Network (ILINet), Weekly National Summary, 2017-2018 and Selected Previous Seasons



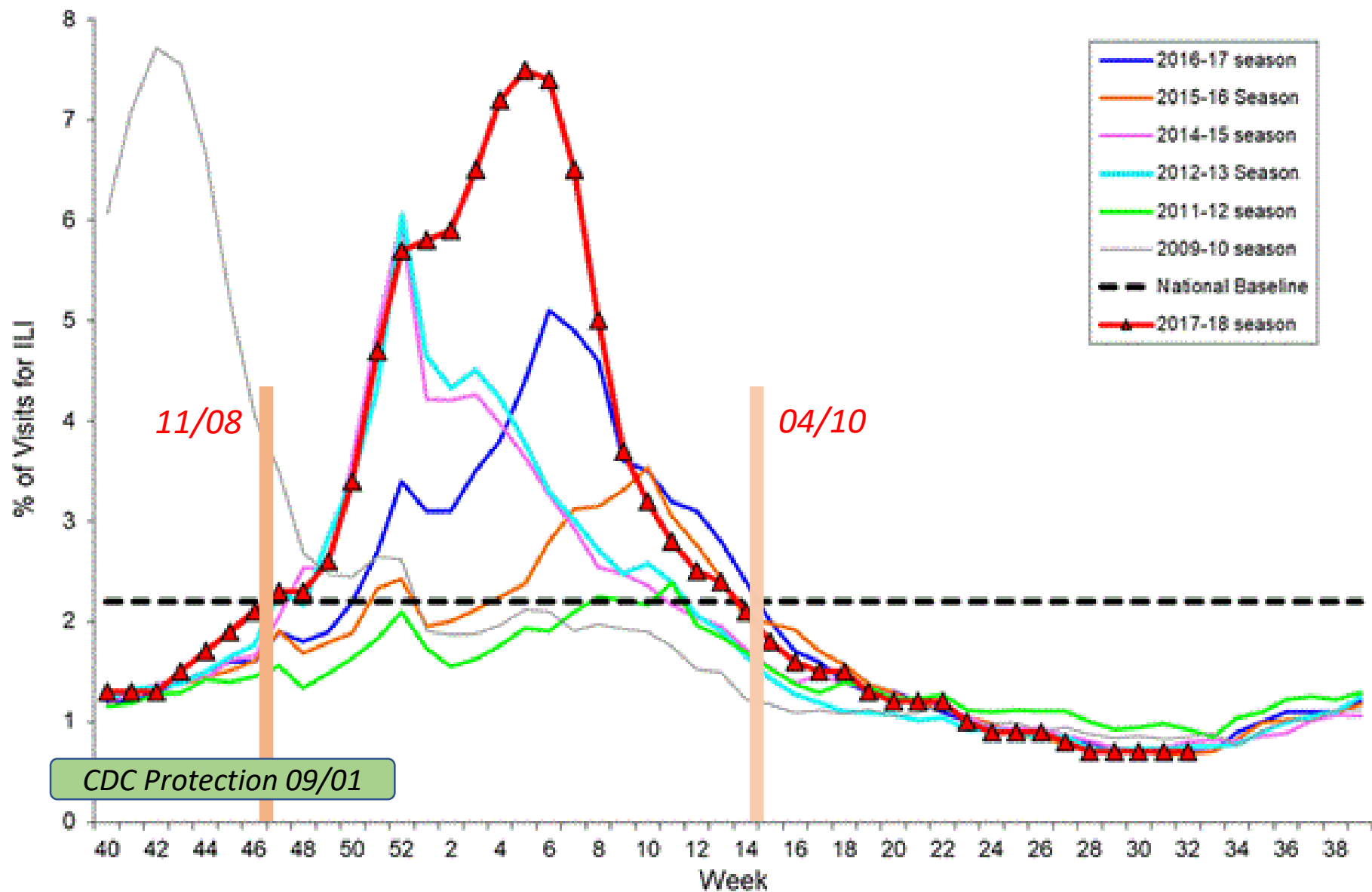
Percentage of Visits for Influenza-like Illness (ILI) Reported by the U.S. Outpatient Influenza-like Illness Surveillance Network (ILINet), Weekly National Summary, 2017-2018 and Selected Previous Seasons



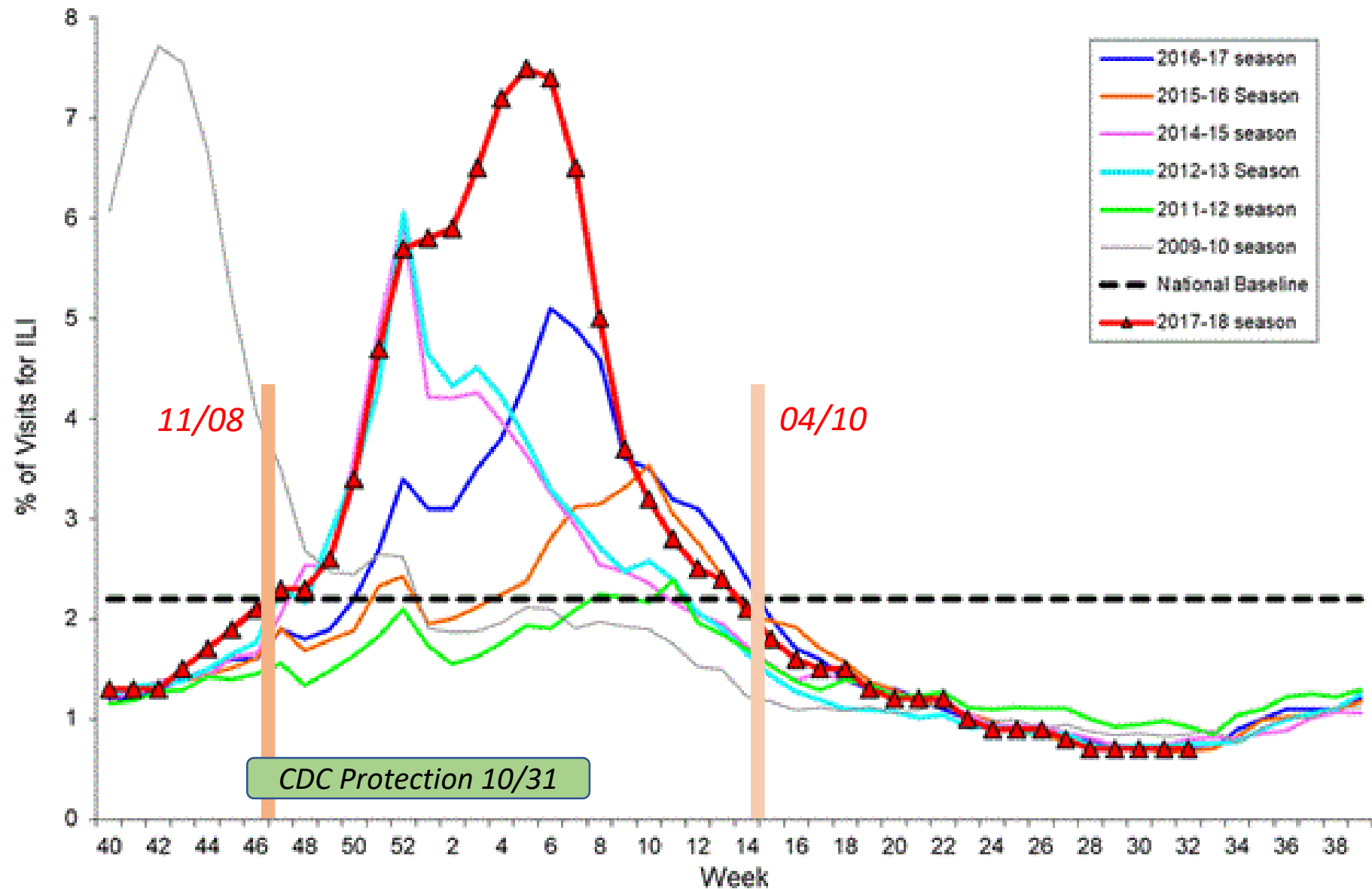
Percentage of Visits for Influenza-like Illness (ILI) Reported by the U.S. Outpatient Influenza-like Illness Surveillance Network (ILINet), Weekly National Summary, 2017-2018 and Selected Previous Seasons



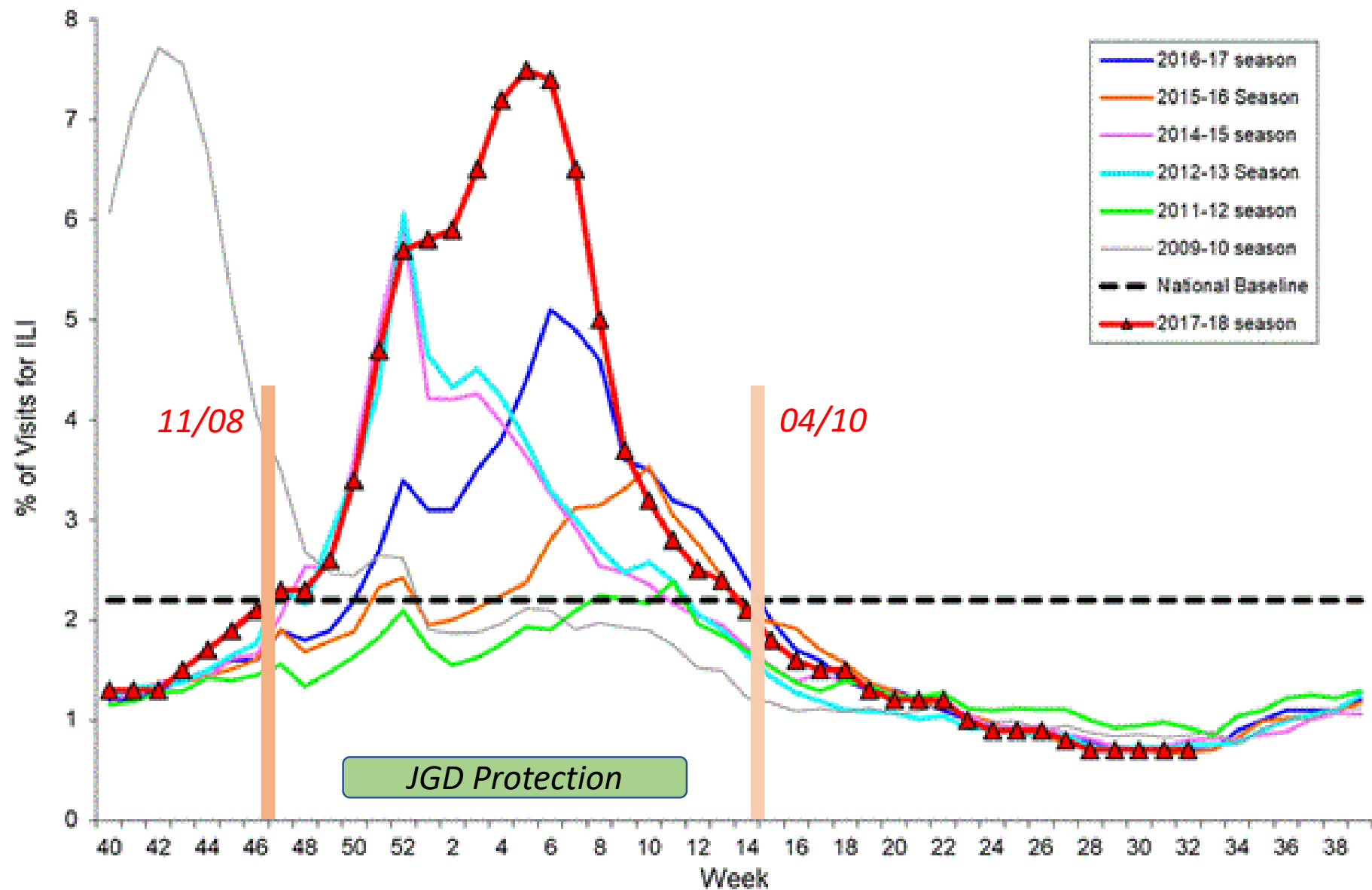
Percentage of Visits for Influenza-like Illness (ILI) Reported by the U.S. Outpatient Influenza-like Illness Surveillance Network (ILINet), Weekly National Summary, 2017-2018 and Selected Previous Seasons



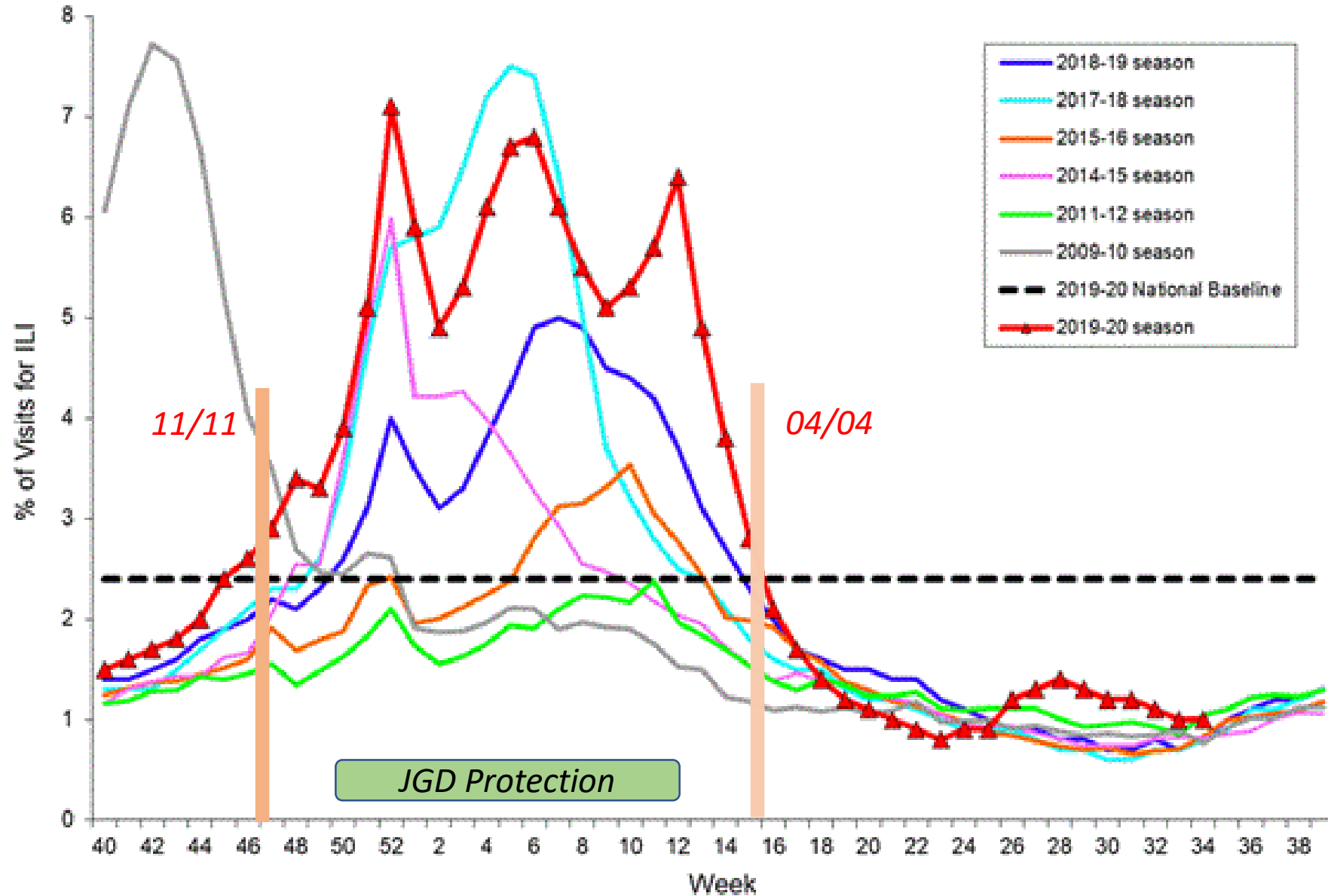
Percentage of Visits for Influenza-like Illness (ILI) Reported by the U.S. Outpatient Influenza-like Illness Surveillance Network (ILINet), Weekly National Summary, 2017-2018 and Selected Previous Seasons



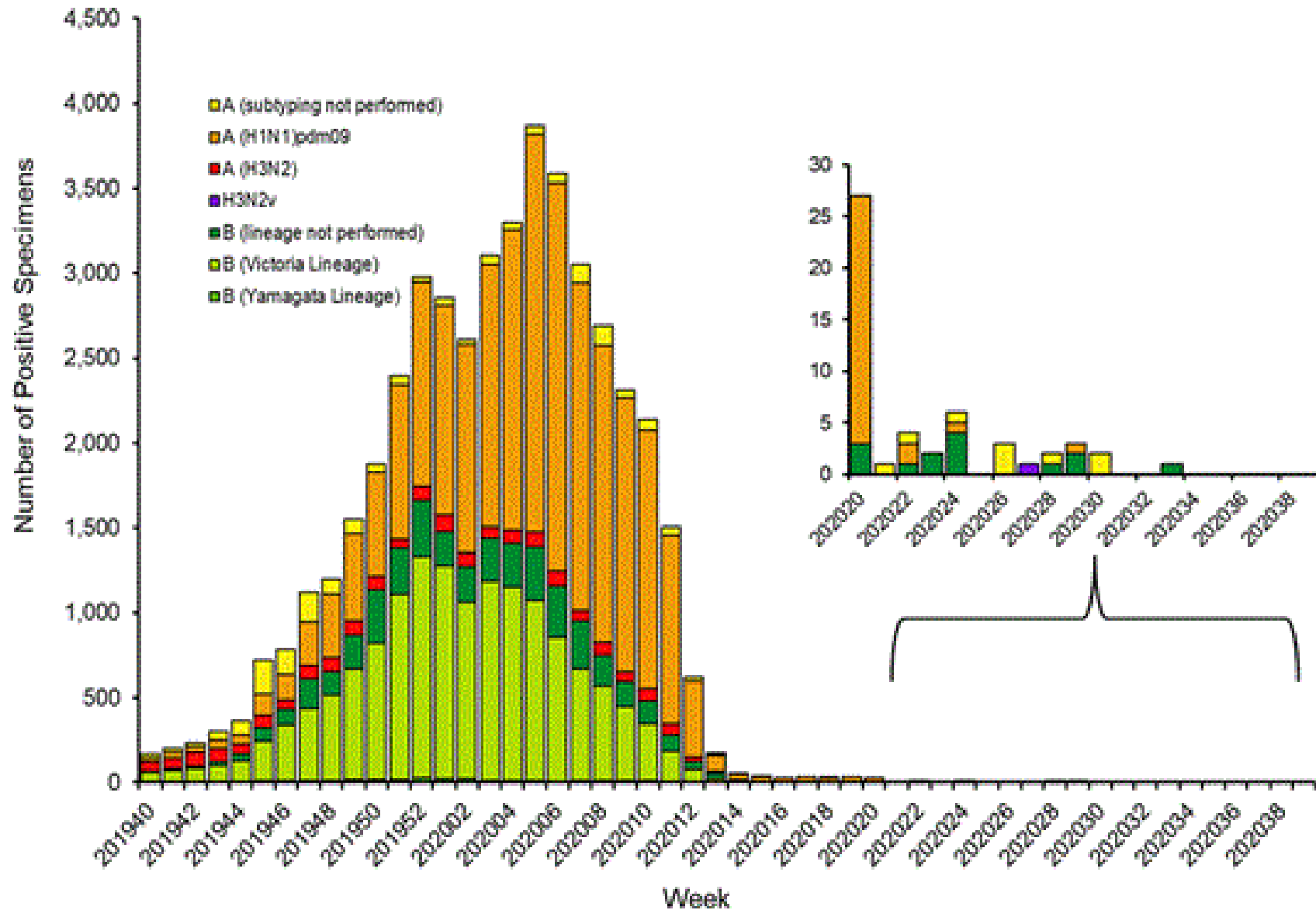
Percentage of Visits for Influenza-like Illness (ILI) Reported by the U.S. Outpatient Influenza-like Illness Surveillance Network (ILINet), Weekly National Summary, 2017-2018 and Selected Previous Seasons



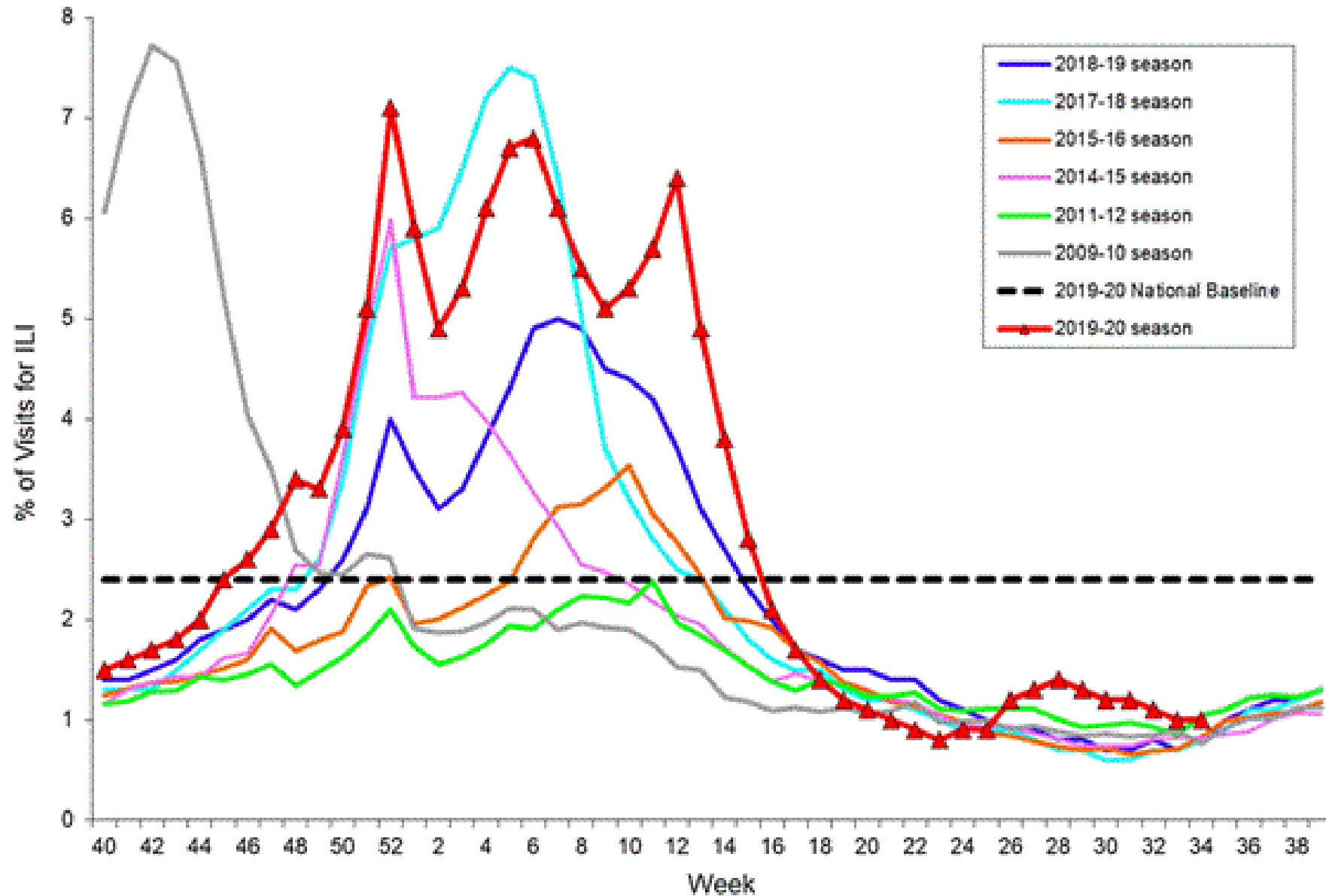
Percentage of Visits for Influenza-like Illness (ILI) Reported by the U.S. Outpatient Influenza-like Illness Surveillance Network (ILINet), Weekly National Summary, 2019-2020 and Selected Previous Seasons



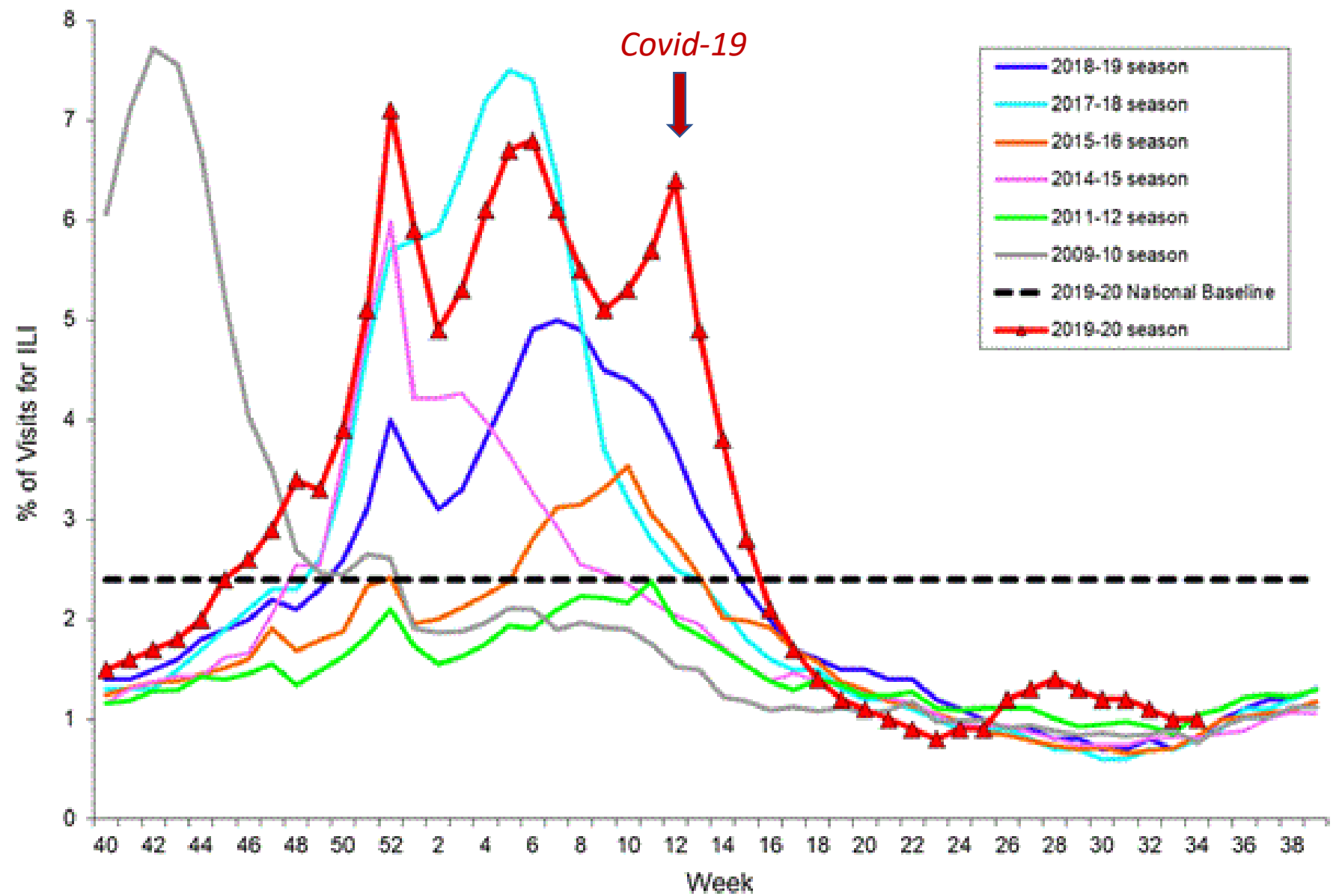
Influenza Positive Tests Reported to CDC by U.S. Public Health Laboratories, National Summary, 2019-2020 Season



Percentage of Visits for Influenza-like Illness (ILI) Reported by the U.S. Outpatient Influenza-like Illness Surveillance Network (ILINet), Weekly National Summary, 2019-2020 and Selected Previous Seasons



Percentage of Visits for Influenza-like Illness (ILI) Reported by the U.S. Outpatient Influenza-like Illness Surveillance Network (ILINet), Weekly National Summary, 2019-2020 and Selected Previous Seasons



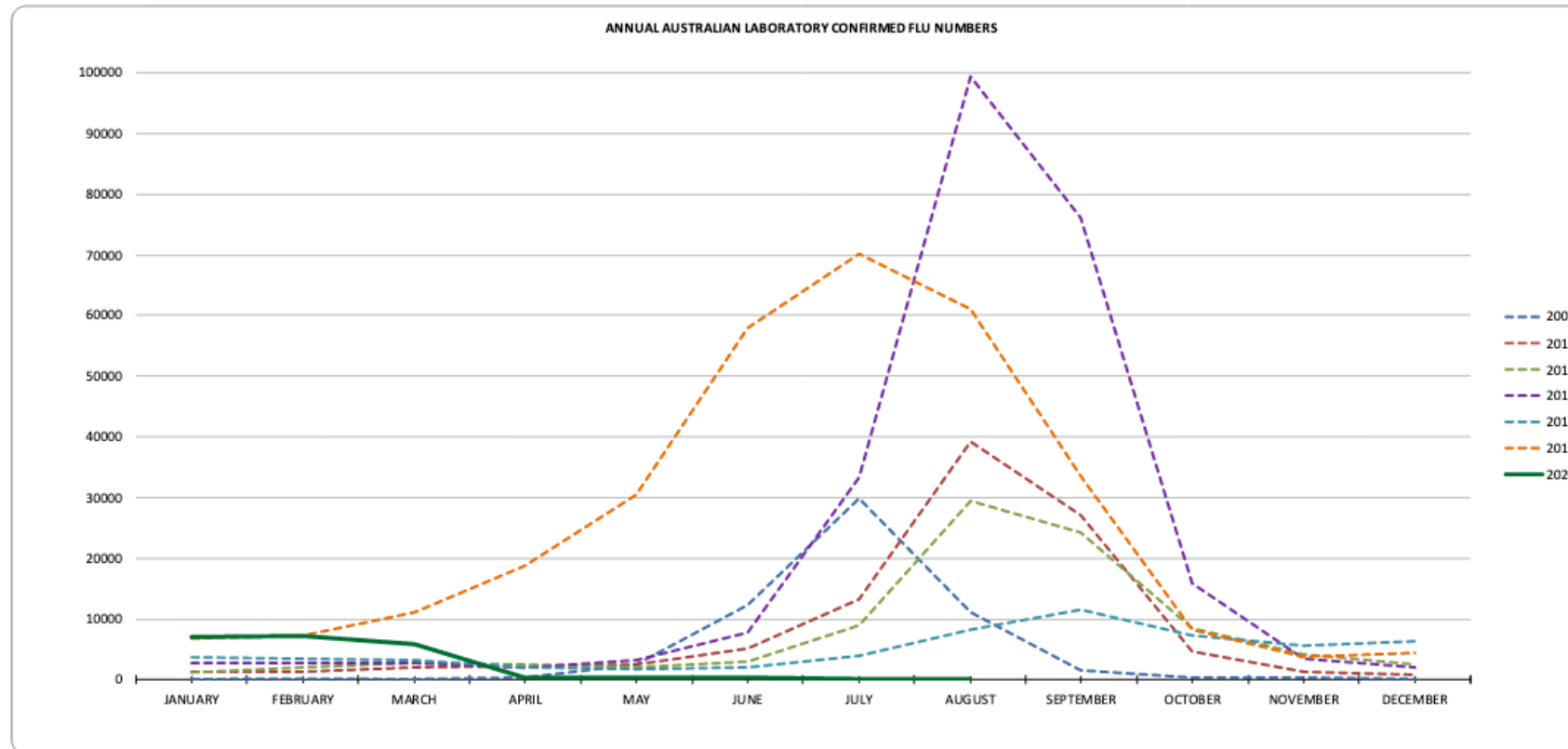
How Bad Will This Year's Flu Season be?

- To partially answer this question, we can look at the recent experience in the Southern Hemisphere
- Their flu season occurs in their winter, which is our summer, usually from May until October

ANNUAL AUSTRALIAN INFLUENZA STATISTICS

YEAR	JANUARY	FEBRUARY	MARCH	APRIL	MAY	JUNE	JULY	AUGUST	SEPTEMBER	OCTOBER	NOVEMBER	DECEMBER	TOTALS
2009	182	125	164	275	2557	12318	29840	11119	1627	407	255	171	59040
2015	1249	1339	1967	2217	2529	5021	13282	39198	27080	4734	1179	788	100583
2016	1169	1970	2664	2433	2064	2837	9042	29426	24217	8465	4040	2557	90884
2017	2762	2750	2815	1939	3285	7793	33207	99367	76060	15912	3369	2031	251290
2018	3746	3481	3174	1977	1717	1988	3969	8168	11506	7320	5548	6267	58861
2019	6829	7161	11158	18667	30372	57842	70151	60964	33572	8319	3734	4316	313085
2020	6974	7170	5895	308	231	218	191	78					21065

LAST UPDATED: 24 August 2020

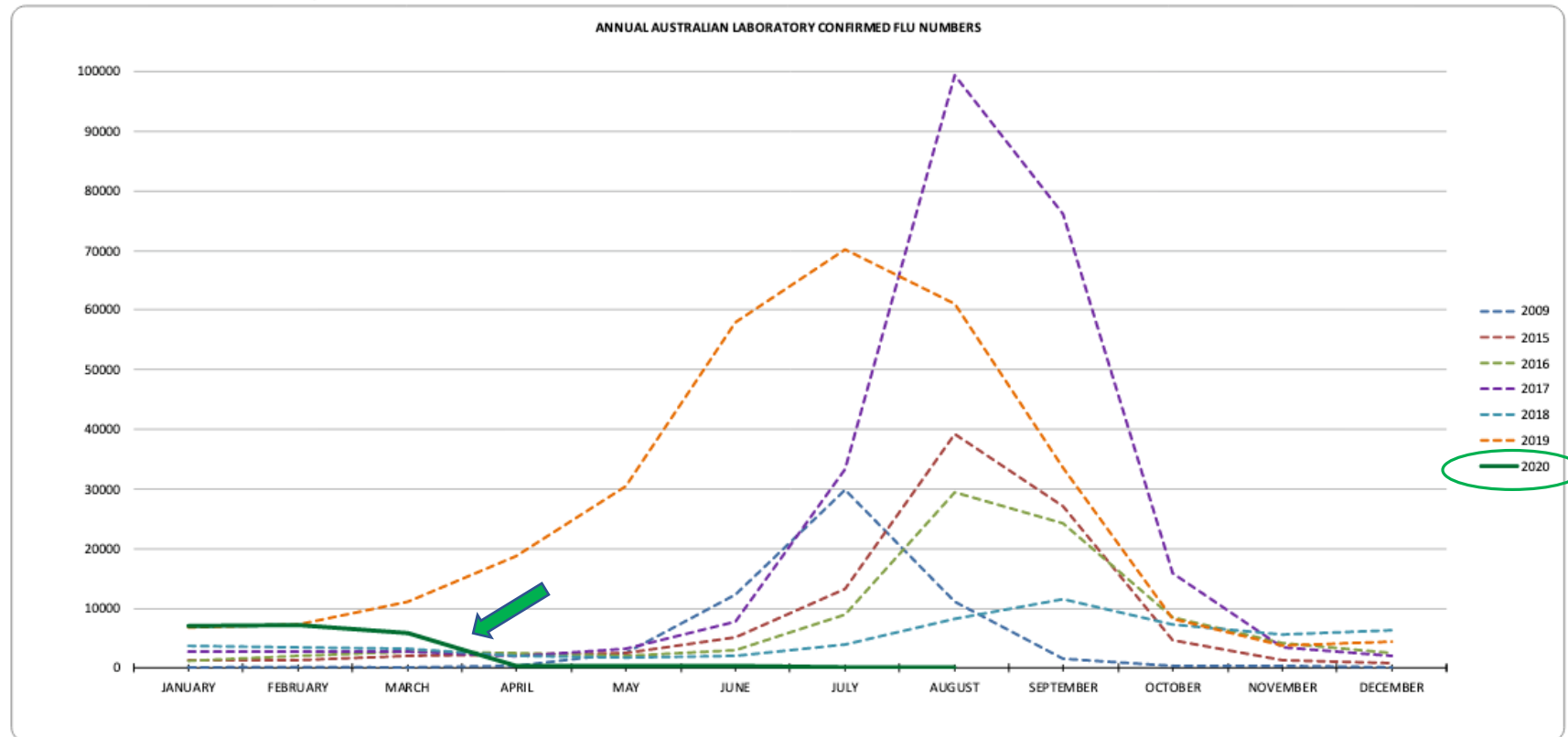


Reference: These statistics are taken from the Aust Government Department of Health, National Notifiable Diseases Surveillance System

ANNUAL AUSTRALIAN INFLUENZA STATISTICS

YEAR	JANUARY	FEBRUARY	MARCH	APRIL	MAY	JUNE	JULY	AUGUST	SEPTEMBER	OCTOBER	NOVEMBER	DECEMBER	TOTALS
2009	182	125	164	275	2557	12318	29840	11119	1627	407	255	171	59040
2015	1249	1339	1967	2217	2529	5021	13282	39198	27080	4734	1179	788	100583
2016	1169	1970	2664	2433	2064	2837	9042	29426	24217	8465	4040	2557	90884
2017	2762	2750	2815	1939	3285	7793	33207	99367	76060	15912	3369	2031	251290
2018	3746	3481	3174	1977	1717	1988	3969	8168	11506	7320	5548	6267	58861
2019	6829	7161	11158	18667	30372	57842	70151	60964	33572	8319	3734	4316	313085
2020	6974	7170	5895	308	231	218	191	78					21065

LAST UPDATED: 24 August 2020



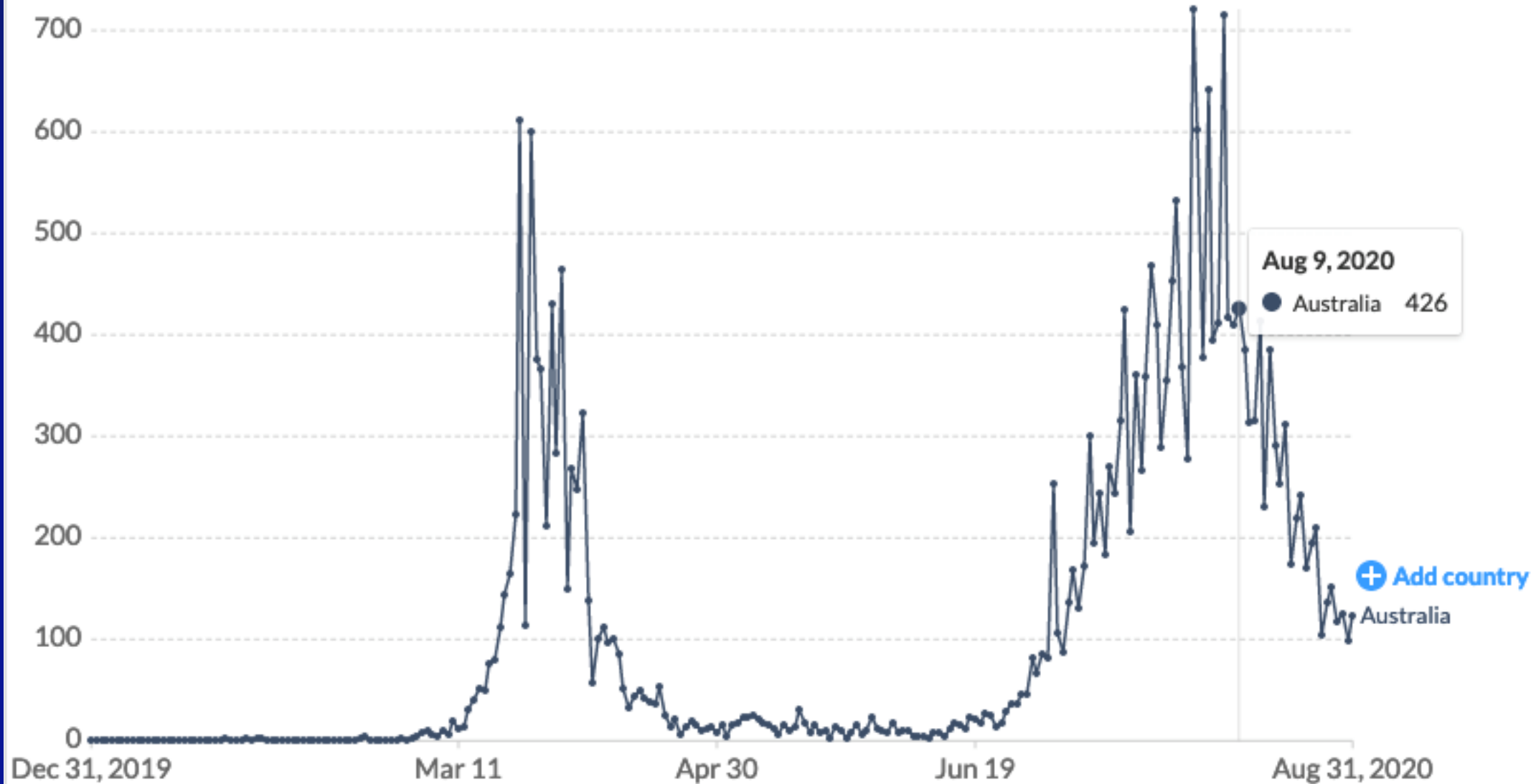
Reference: These statistics are taken from the Aust Government Department of Health, National Notifiable Diseases Surveillance System

Daily new confirmed COVID-19 cases

The number of confirmed cases is lower than the number of actual cases; the main reason for that is limited testing.

LINEAR

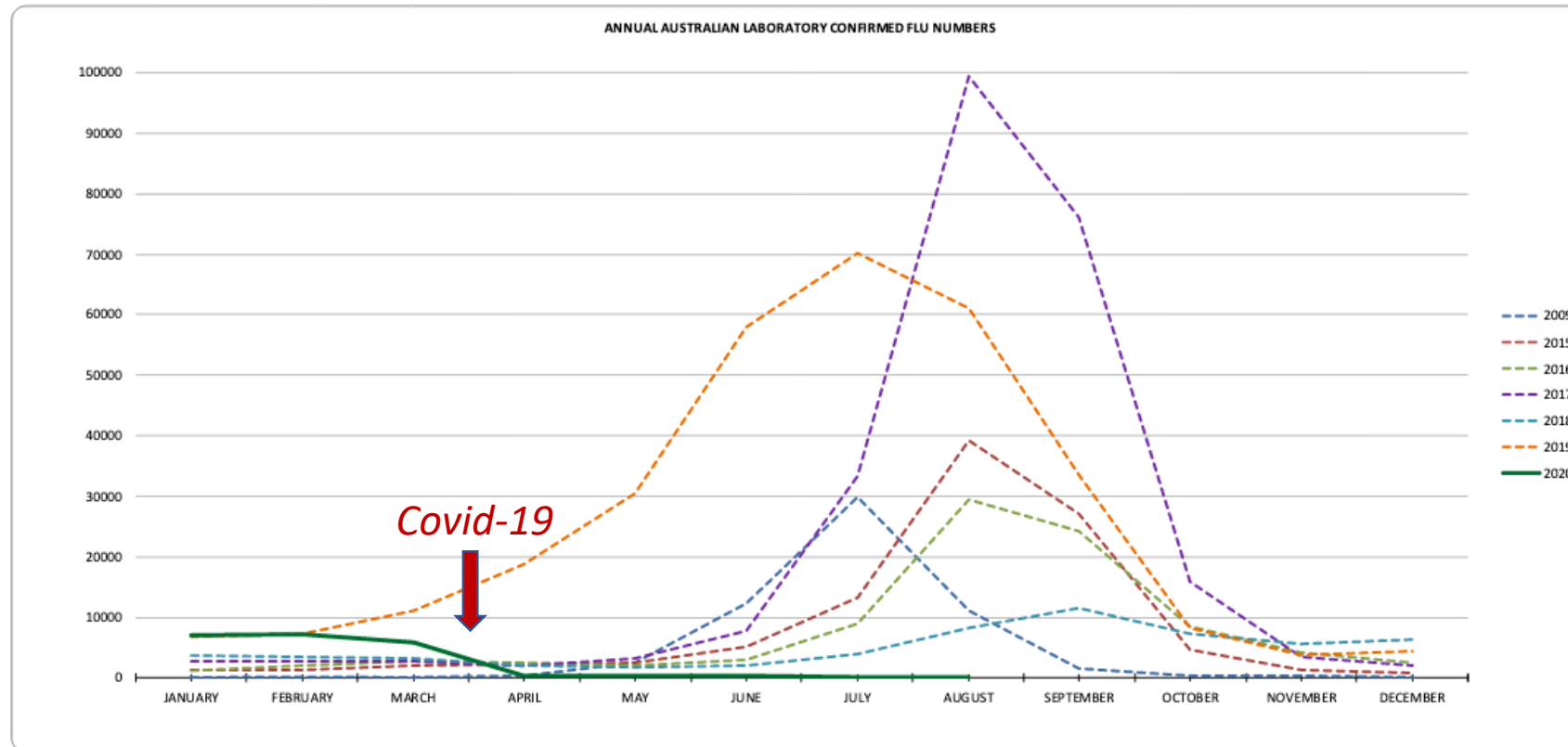
LOG



ANNUAL AUSTRALIAN INFLUENZA STATISTICS

YEAR	JANUARY	FEBRUARY	MARCH	APRIL	MAY	JUNE	JULY	AUGUST	SEPTEMBER	OCTOBER	NOVEMBER	DECEMBER	TOTALS
2009	182	125	164	275	2557	12318	29840	11119	1627	407	255	171	59040
2015	1249	1339	1967	2217	2529	5021	13282	39198	27080	4734	1179	788	100583
2016	1169	1970	2664	2433	2064	2837	9042	29426	24217	8465	4040	2557	90884
2017	2762	2750	2815	1939	3285	7793	33207	99367	76060	15912	3369	2031	251290
2018	3746	3481	3174	1977	1717	1988	3969	8168	11506	7320	5548	6267	58861
2019	6829	7161	11158	18667	30372	57842	70151	60964	33572	8319	3734	4316	313085
2020	6974	7170	5895	308	231	218	191	78					21065

LAST UPDATED: 24 August 2020



Reference: These statistics are taken from the Aust Government Department of Health, National Notifiable Diseases Surveillance System

Thank You!

